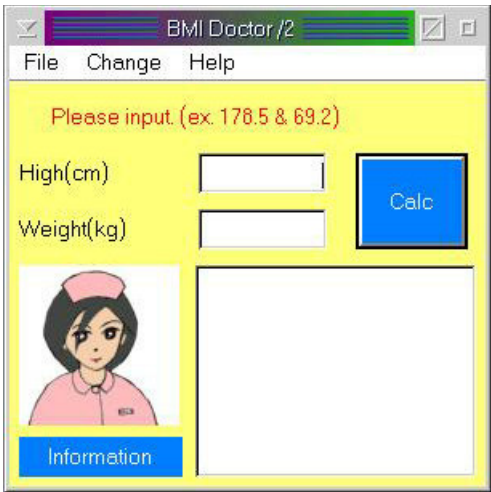


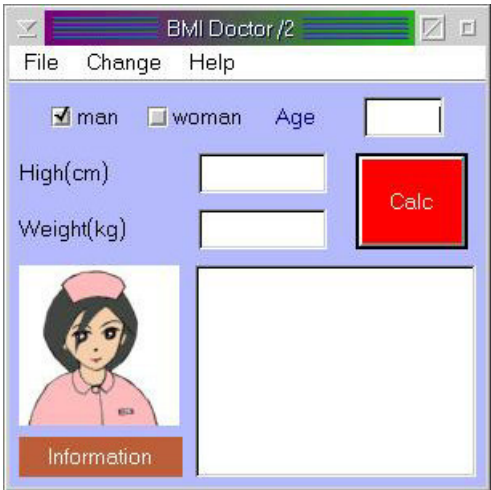
BMI Doctor/2 ver 1.14

Copyright torakun(TetuGen.ikeI) Mail torakun280@oboe.ocn.ne.jp

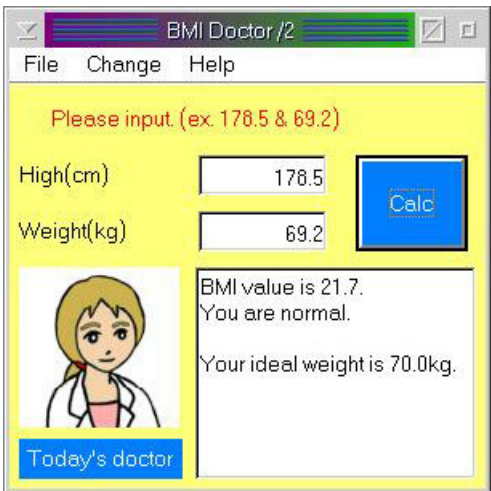
Run install.cmd.
Enjoy!

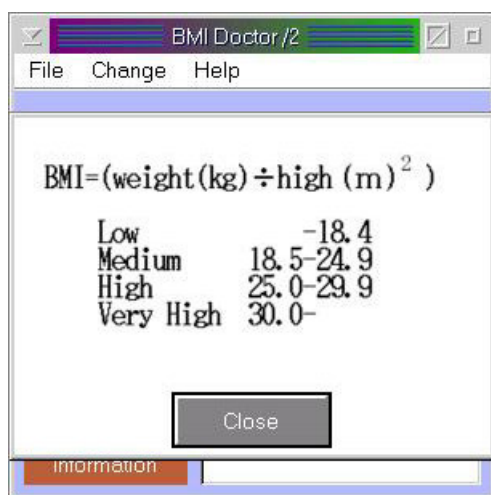


BMI mode.



Basal metabolism mode. (Change > BM)





BMI value list. (Help > BMI value list)

File>SAVE(font,color,position)
File>Add DB(A calculation result is preserved in a BMIDR2.txt.)
Help>Open DB(BMIDR2.txt is opened.)

Let's make original dll file. (BMPTODLL.CMD is included in Dr.dialog.)

BMPTODLL.CMD BMIDR2.DLL BMIDR?.bmp

My BMP Pack(<http://hp.vector.co.jp/authors/VA028575/BMIDRBMP.1zh>)