



twoOStwo™  
Virtual Machine  
for Windows

Parallels Ltd.

---

<http://www.parallels.ru>, [sales@parallels.ru](mailto:sales@parallels.ru), tel./fax: +7(095) 263-8043

---

# 1. Product overview

twoOSTwo™ virtual machine for Windows NT/2000 is designed to enable running multiple operating systems and its applications simultaneously with the primary Windows NT/2000 operating system on a single PC.

twoOSTwo™ gives an opportunity to switch between operating systems without rebooting, consolidate and virtualize computing environment, resulting in reduced hardware costs and increased productivity (Figure 1). Product can be used for the following purposes:

- Legacy software users can organize smart and low cost migration using both legacy and new operating system concurrently without rebooting;
- Help desk centers can support multiple system configurations for the different user environments concurrently;
- Software developers can safely test and debug software within complex cross-platform network environment on one computer;
- Sales people can quickly setup environment with multiple computers for presentation on a single laptop;

twoOSTwo™ technology creates a number of virtual machines with a full set of standard virtual hardware inside (Figure 2). Operating systems and applications are isolated inside these virtual machines and share a single piece of physical hardware. Product has the following features:

- Runs under Windows NT/Windows 2000 and supports the following guest operating systems: OS/2 v3, OS/2 v4, OS/2 v4.5, DOS, Windows 3.11, Windows 95, Red Hat Linux 6.0; product can be easily upgraded to support any other operating systems;
- Quasi-emulation technology offers improved guest operating system performance;
- Full set of standard PC virtual hardware support including PIT, PIC, CMOS, IDE HDD, CD-ROM, keyboard, mouse, VGA, COM, LPT etc.
- VESA 2.0 support enables using any VESA-compatible SVGA modes (up to 1600x1200x16M) in the guest operating system (Figure 3);
- NE2000 and NE2000plus support enables full guest operating system networking (Figure 4);
- Non-standard hardware support is available by request (e.g., DESKO card reader);
- Configuration editor allows to easily create, edit and manage multiple virtual machine configurations (Figure 5);
- FDD and CDROM ISO images support;
- Product is packed for a complete, error free out-of-the-box installation (Figure 6).

## 2. Figures



Figure 1

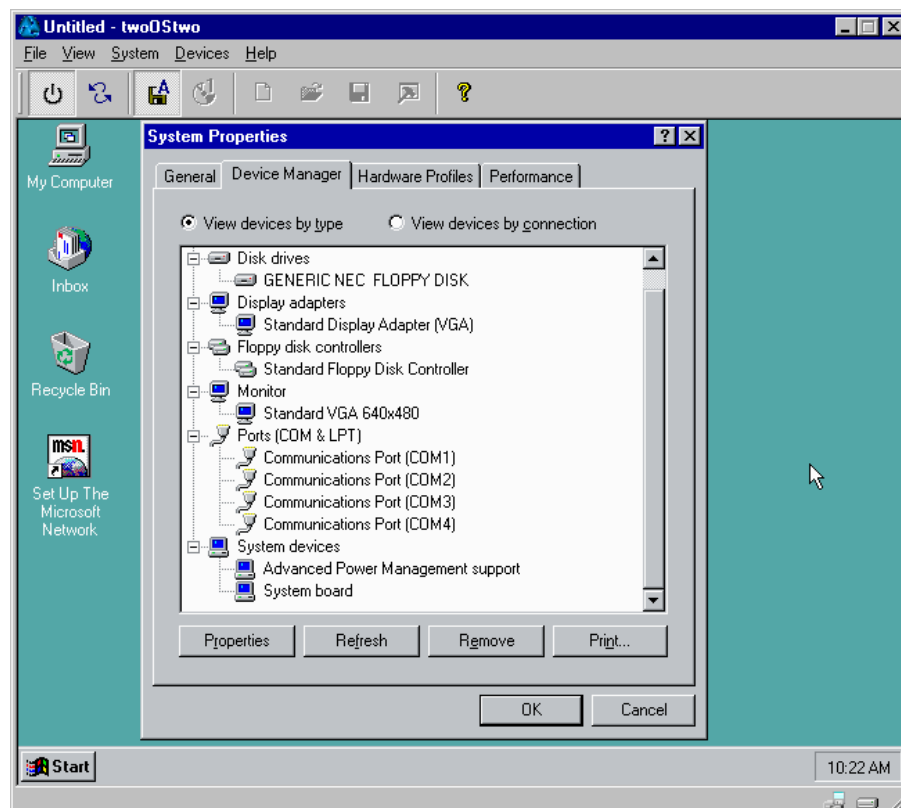


Figure 2

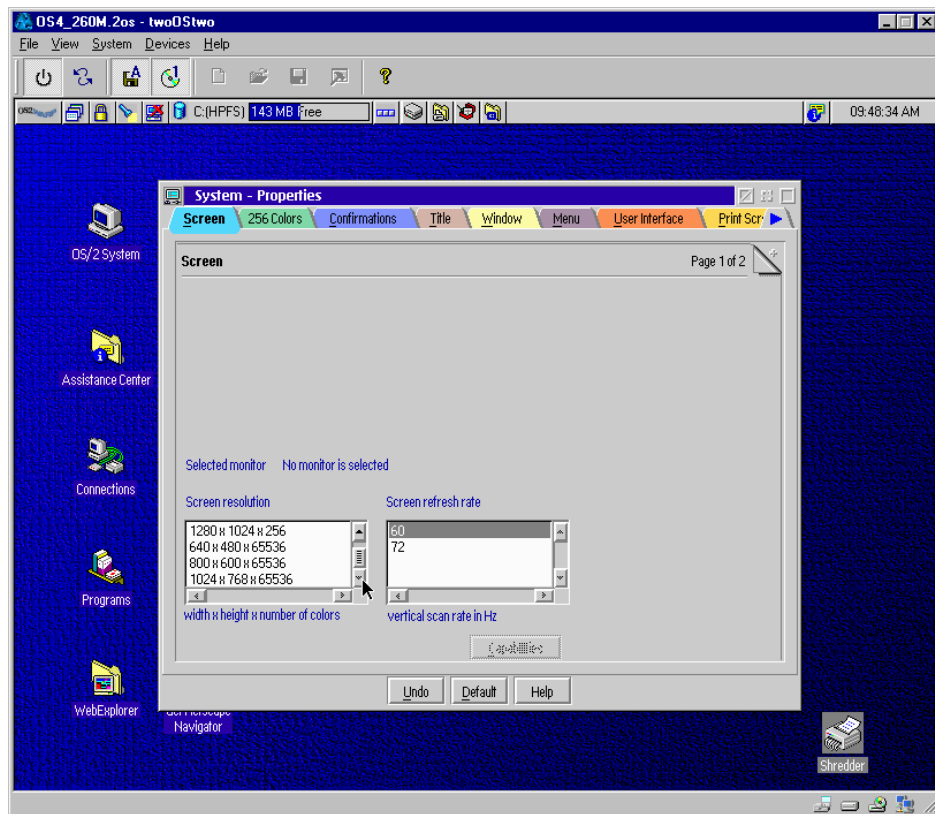


Figure 3

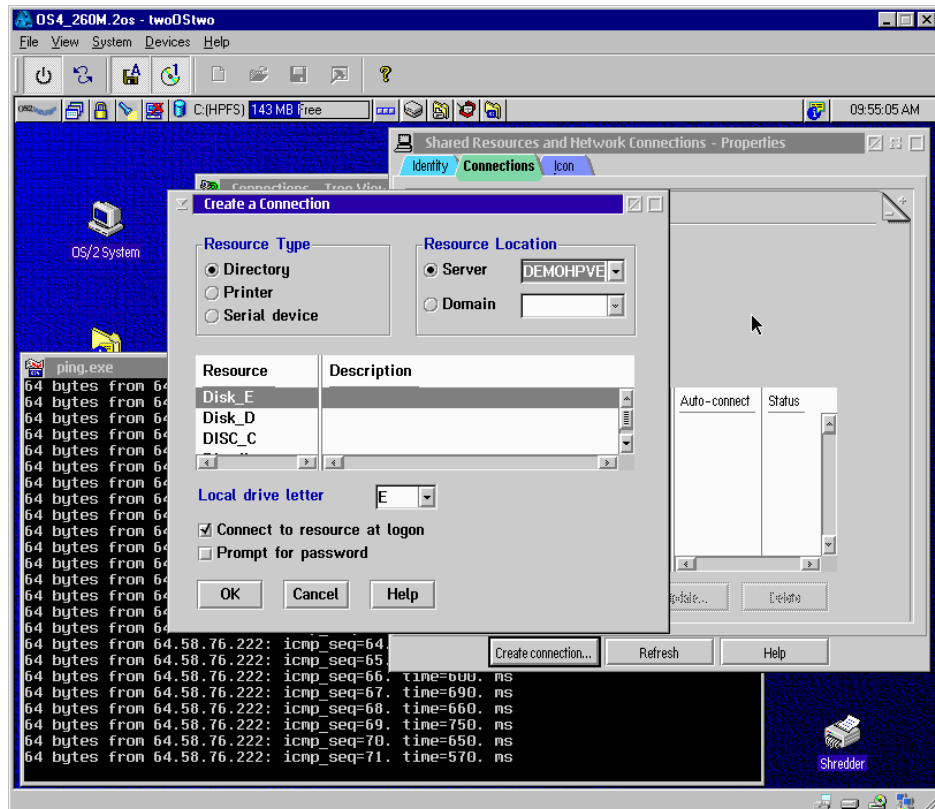


Figure 4

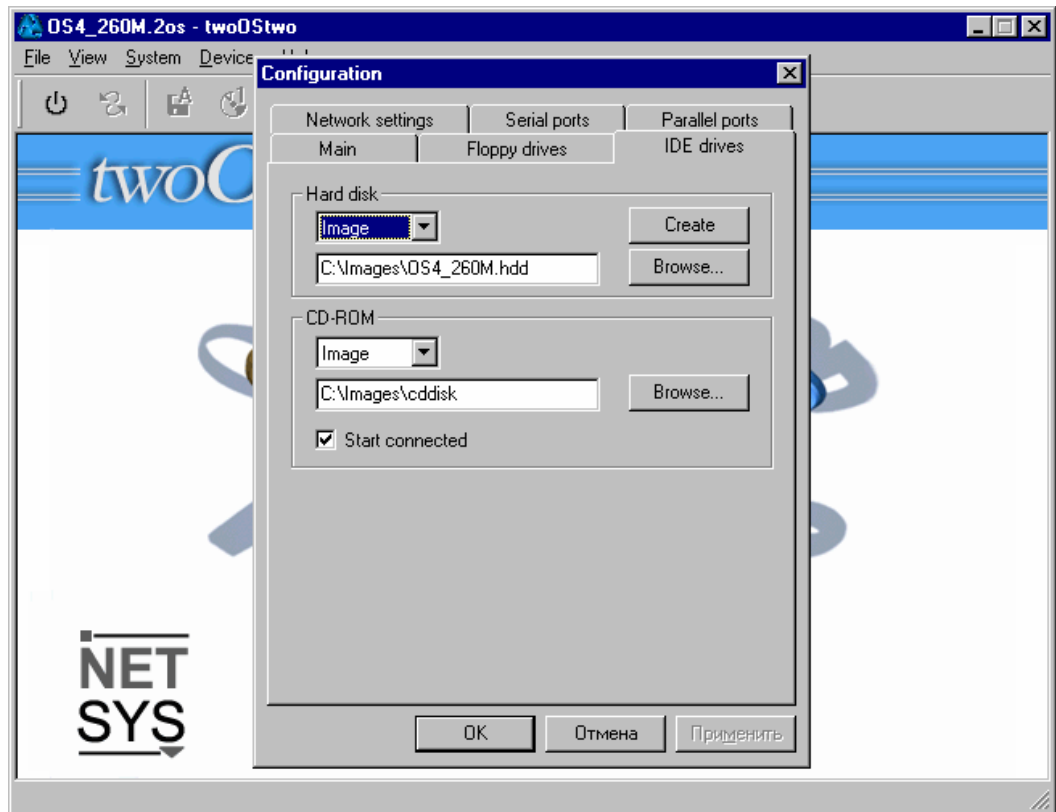


Figure 5

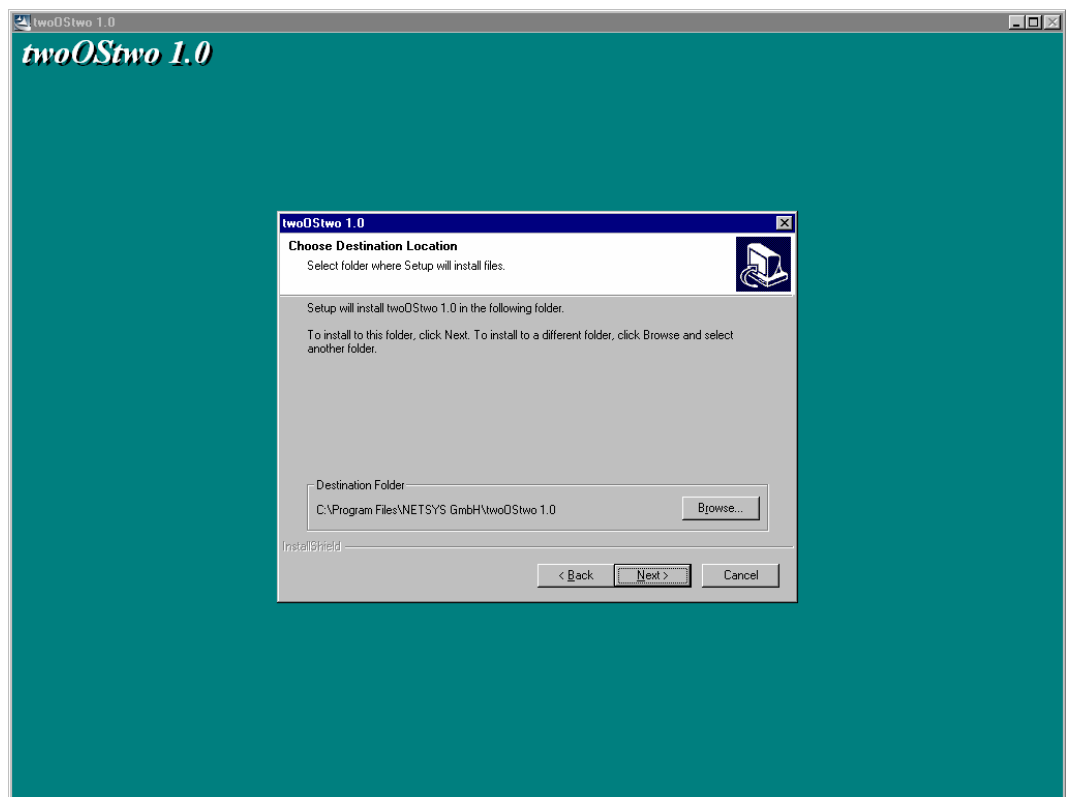


Figure 6