

QXmlEdit: the manual

Introduction

Why another editor for XML? QXmlEdit purpose is edit a complex XML document without copying and pasting elements with textual editors. Complex documents can be a nightmare to handle as text, even with syntax colored editors. Last, I wanted to test Qt framework as a viable multi platform solution for this kind of utilities.

Main functionality

Menus are divided in main functionality group; most used commands are kept visible in main dialog as a button on the right.

File: XML document creation and saving

Edit: clipboard handling; find command

XML: XML tree manipulation (insertion, deletion, etc)

Navigation: XML tree navigation

View: view commands and options

File

File contains usual actions, with an exception: “Create from clipboard”, that imports an XML document from the clipboard, if possible. This feature is handy for inspecting resources from other programs without exporting them in a temporary file.

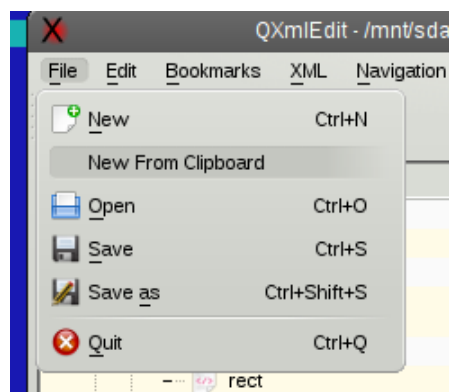


Illustrazione 1: File Menu

Edit

The usual clipboard operations act on an internal clipboard regarding all that concerns XML nodes handling (i. e. it is not possible to paste text from an extern program into QXmlEdit), but each time an operation is done, a text value of the selection is copied as text in system clipboard, so XML can be exported as text to other programs.

The clipboard operations act on the whole selected node subtree, including any child.

Find

Find panel gives you the option to search a string.

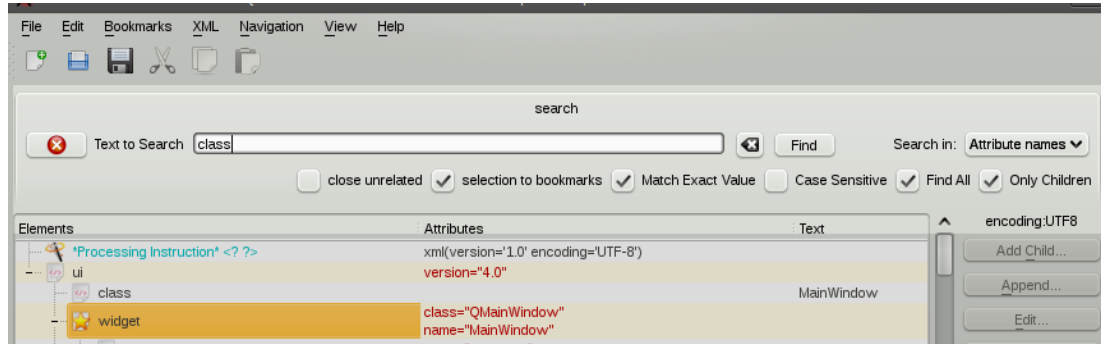


Illustrazione 2: Find Panel

Find options explanations:

- “**Search in**” defines where the search is performed: in element tags, attribute names, attribute values, element text or in all scopes.
- “**close unrelated**” close all the branches that does not contain any occurrence of the search text.
- “**selection to bookmarks**” adds all occurrences found to bookmarks collection.
- “**match exact value**” executes the search of the exact value of text (opposed to regard the text as a substring)
- “**case sensitive**” does what the name suggest
- “**find all**” mark all the occurrences of the search pattern with a background pattern to ease the reading, elsewhere the search will stop to first match.
- “**only children**” the search can be limited only to children of the selected item or to the whole tree.

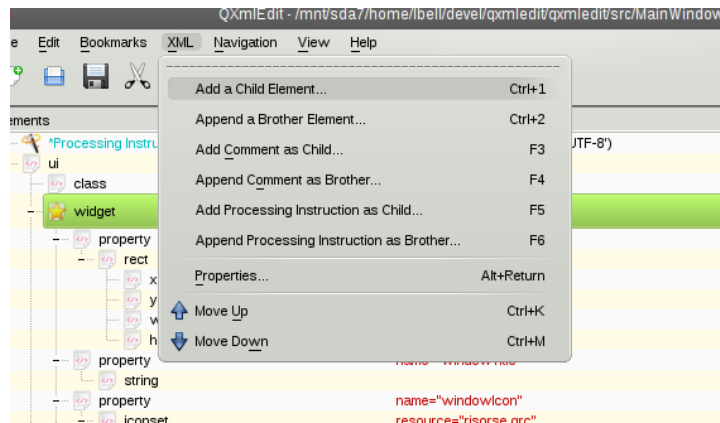
XML menu

This menu contains commands that perform XML tree manipulation, allowing inserting of elements, processing instructions and comments relative to the actual selection.

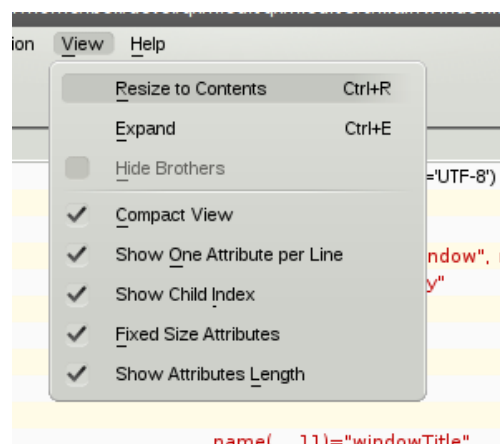
Each item has two options: one to create a child item of the selected one and another to create a new item as a brother (same level) of the selected one.

Each item can be moved relative to its brothers via the “Move Up” or “Move Down” commands.

Edit menu commands (Cut and Paste) commands are the only way to move an item into another hierarchy.



View menu



View menu has three commands.

- **Expand:** expands the whole tree at once
- **Resize to Contents:** resize columns to fit the text
- **Hide Brothers:** close all the brothers of the selected element; useful when the element is contained in a large set. If any element is closed, an ellipsis sign “...” appears. To restore normal behavior reselect same option.

Other items are options relative to appearance:

- **Compact View:** show the element text and comments in a single line, attributes are shown in columns if “Show One Attribute per Line” is selected. If the text element has no attributes, its text is shown in second column.
- **Show One Attribute per Line:** display each attribute in a separate line.
- **Show Child Index:** next to each item icon is shown its ordinal position in the hierarchy.
- **Show Attributes Length:** display the attribute value length next to the value. Useful to verify data when the attributes value is used to carry data for electronic processing.
- **Fixed Size Attribute:** this item activates the display of the length using a fixed picture and activates the use of a fixed width (non proportional) font in the attribute column.