

**HP TopTools Manageability**

Specifications

Web Based Device Management

Web Based Device Management

HP TopTools is a modular web based device management tool designed to provide dynamic information about devices on your LAN from any location on the network. It manages:

- NetServers
- Kayak PC Workstations
- OmniBook Notebook PCs
- Vectra and NetVectra PCs
- Jornada PC Companions
- ProCurve and AdvanceStack Hubs and Switches
- JetDirect connected printers
- Standards based devices supporting DMI, SNMP or WBEM / WMI

HP TopTools is available for FREE for all supported HP products.

HP TopTools Fits Into Your Environment

HP TopTools has been integrated into enterprise management platforms to provide system and network administrators with a superior management solution for managing HP hardware from within their existing environment. Award winning integration links HP TopTools device management into key management platforms such as HP OpenView Network Node Manager for Windows NT, Computer Associates Unicenter TNG and Tivoli Management Software.

Modular Design, Easy to Install and Easy to Use

HP TopTools is comprised of five modules:

- TopTools for Servers
- TopTools for Desktops
- TopTools for Notebooks
- TopTools for Hubs & Switches
- Integration with WebJetAdmin for the management of HP JetDirect connected printers

Each module focuses on meeting the special management needs unique to the environment. Everything you need to install HP TopTools is packaged into one installation wizard making installation and deployment simple. The user interface is a web browser, so becoming adept with HP TopTools is quick and easy.

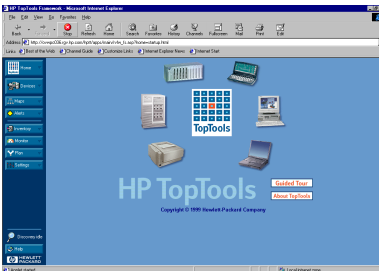
From a single screen, you have access to:

- Device Lists & Properties
- Discovery Database and options
- Alert Handling
- Inventory Reports
- Remote Configuration

Once devices are discovered, HP TopTools provides you with quick and easy access to information on devices by type or topology providing information to identify and fix potential issues before they become a problem. Real-time device status can be obtained by selecting various device "pages" for a particular device or a group of devices. This type of dynamic access to information can increase the efficiency of your help desk personnel or speed-up troubleshooting increasing device availability.

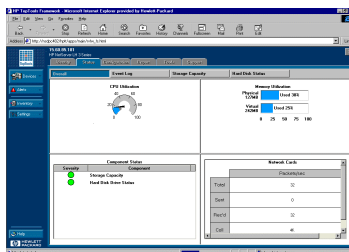
Standards Based

HP TopTools is capable of managing any SNMP, DMI or WBEM/WMI device but gives prominence to the instrumentation built into Hewlett-Packard hardware. HP TopTools is the device management component of Hewlett-Packard's comprehensive management product offering.



HP TopTools for Servers

HP TopTools for Servers is an all-in-one, browser-based management software application for configuration, administration and monitoring of HP NetServers.



HP TopTools for Servers automatically and continuously monitors key environmental events and critical system components. When you want to evaluate system health or plan your future capacity needs, use these functions to check on important performance variables:

- Access the event log to review a complete history of server activity in one place
- Receive proactive alerts indicating performance degradation or potential system problems either on screen or directed to your management platform console
- Review the server inventory and configuration report to verify your server's configuration components
- Access your in house, reseller or HP support sites directly through server support pages

HP TopTools utilizes HP Fault Notifier to "phone home" to HP, providing enhanced support delivery for hardware related problems on the NetServer platform. HP Fault Notifier automatically notifies HP via Internet e-mail if NetServer hardware problems occur, giving you increased NetServer efficiency and effectiveness. HP Fault Notifier is included at no additional cost as part of your NetServer Support Agreement or HP SupportPack product.

The HP TopTools Remote Control card extends the functionality of TopTools by providing secure access to HP NetServers regardless of system state, even if the NOS is down or even if the power is down! Together, these tools help you plan better and react faster to keep your NetServers up and running.

All NetServers ship with HP TopTools, but because server management requires more than managing the hardware, HP NetServer L Series systems also ship with HP OpenView ManageX/SE for NOS and application management.

HP TopTools for Desktops and Notebooks

HP TopTools for Desktops and Notebooks automates your hardware inventory and reduces the number of deskside visits.



By avoiding desk-side visits and enabling faster troubleshooting HP TopTools for Desktops and Notebooks helps you reduce cost and improve efficiency. The strength of TopTools for Desktops and Notebooks is that it lets you manage your PCs remotely not only one by one but also simultaneously.

HP TopTools for Desktops and Notebooks enables efficient and automatic asset and inventory management, finding and tracking hundreds of PCs over the network. Important details about PCs (for example Serial number, user name, processor speeds, hard disk drive(s) and memory, operating system, BIOS and driver versions) can be collected and used for inventory or planning purposes.

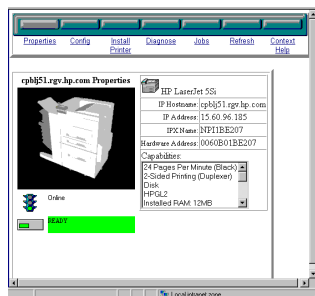
It also allows the system administrator to remotely manage multiple PCs, for instance power on remotely, change security settings, or update system software such as BIOS, hardware diagnostics or drivers.

It alerts system administrators when something goes wrong on a PC (disk drive failure detection, virus detected) to help you fix issues before they turn into problems thus reducing downtime and loss of data.

When it comes to security HP TopTools lets you remotely and centrally manage the security of your PCs. From detecting chassis intrusion, changing passwords to disabling floppy drives it gives you full control on your environment.

Based on industry standards, such as DMI, WfM, or WBEM/WMI TopTools not only manage HP PCs, it also lets you perform industry standard management on legacy and non-HP PCs as well to allow you to manage your complete installed base.

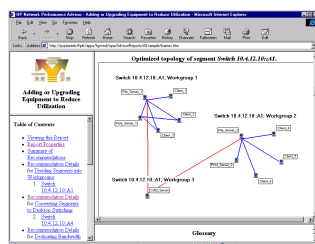
Managing Printers with HP TopTools



With the integration of Web JetAdmin and HP TopTools, you can discover and manage HP JetDirect-connected printers from within the HP TopTools interface. Administrators can view printer status such as toner low or paper out and troubleshoot printer problems with a host of network diagnostics including NetWare TCP/IP and JetDirect information. Printer settings such as password, control panel access, network subnet mask and paper trays can also be configured from within TopTools. TopTools console and asset management capabilities are available for all JetDirect-connected devices.

WebJetAdmin is now available in an integrated TopTools installation at www.hp.com/topools making it even easier to manage your HP printers within your TopTools environment.

HP TopTools for Hubs & Switches



If you've ever asked yourself if there was an easier way to manage the devices on your network, see all of your network traffic at once, or even plan for future growth, the answer is HP TopTools for Hubs & Switches software. HP TopTools for Hubs & Switches is a breakthrough in network management software that gives you more network with less work.

HP TopTools for Hubs & Switches helps you get your hands around current and future challenges of managing your network. There are three primary components of HP TopTools for Hubs & Switches: Managing Network Devices, Managing Network Traffic and Managing Network Growth.

Managing Network Devices: Beyond just providing traditional device configuration and management, TopTools for Hubs & Switches saves you time every day by swiftly and automatically finding, fixing and informing you of common networking problems such as chattering NICs or incorrectly installed cabling. And because TopTools for Hubs & Switches is Web based you have management access from anywhere on your Intranet using a Web Browser.

Managing Network Traffic: HP TopTools for Hubs & Switches monitors your entire network at once. It is able to simultaneously show traffic on up to 1,500 segments without the use of probes thereby helping you troubleshoot poor network performance. It monitors all server connections and can show you the top five talking nodes on any segment including Gigabit ports with a single click of a mouse.

Managing Network Growth: HP TopTools for Hubs & Switches also analyzes and summarizes information about your network's traffic patterns in clear and easy to follow reports. As unbelievable as it seems, HP TopTools for Hubs & Switches gives clear, easy-to-follow plans detailing the most cost-effective way to improve the performance of your network, including recommendations on server placement and connectivity speeds.

From managing devices to troubleshooting to planning network upgrade, HP TopTools for Hubs & Switches takes the work out of network management.

Detailed Specifications

Management Server	
Hardware	HP NetServer with Pentium 133 MHz or higher processor
	64 MB of RAM if only installing TopTools for Desktops
	64 MB of RAM if only installing TopTools for Servers
	96 MB of RAM if only installing TopTools for Hubs & Switches
	128 MB of RAM if installing all components
	100 MB of free disk space if installing default selection <ul style="list-style-type: none"> • add 75 MB if installing TopTools for Hubs & Switches • add 20 MB if installing Web JetAdmin
	NIC Card required
Software	Microsoft Windows NT 4.0 or NT Server 4.0
	Administrator privileges
	If using DHCP, make sure its IP address is "reserved" or "fixed"
	TCP/IP network stack installed
	Microsoft IPX/SPX services (optionally installed)
	NetWare Client Services (optionally installed)
	SNMP Services (install program prompts for this)
Managed Device	
Servers	
Hardware	HP L Series NetServer (except LE, LF and LM)
	HP E Series NetServer (E 45 and later)
	Non-HP server with WBEM/WMI, DMI or web agents
	12 MB disk space
	32 MB of RAM
Software	Either: <ul style="list-style-type: none"> • Novell NetWare v3.2, 4.11, 5.0 • IntranetWare v4.11 (including SMP, excluding SFT III) • IntranetWare for Small Business • Microsoft NT v3.51, v4.0, or Backoffice Small Business Server v4.0 (all with Service Pack 3 or higher) • SCO Unix 5.0.4
	TCP/IP and/or IPX
	SNMP Services installed and running
Desktops	
Hardware	10 Mb disk space
	NIC for remote management
Software	TopTools for Desktops agent for HP PCs
	DMI for non-HP PCs
	Windows 9x or NT
	SNMP or WBEM / WMI is optional
Management Console	
An administrator with authorized access may use any PC or NetServer on the network as the management console.	
Hardware	Any PC or NetServer
	Color requirements: 800x600 and 256 colors minimum (32768 colors if using Windows NT and IE earlier than 4.01 SP1)
Software	Microsoft Internet Explorer 4.01 or later
	URL to the management server should include your domain (http://machine.company.com/hptt)

Detailed Specifications

TopTools for Servers								
TopTools for Servers 4.1								
		Novell NetWare 3.2, 4.11, 5.0	Microsoft NT 3.51, 4.0 (incl. SMP)	SCO UNIX OpenServer 5.2	E 45/E 50	LC 3	LPi	LH 3/LH 3r & LH 4/LH 4r LXr 8000
Status Information								
	CPU & memory utilization		•		•	•	•	•
	Network utilization	•	•		•	•	•	•
	Storage capacity & history	•	•	•	•	•	•	•
Event Information								
	ASR (Automatic Server Restart)	•	•	•	•	•	•	•
	Server up/down	•	•	•	•	•	•	•
	Predictive disk problem warning	•	•	•	•	•	•	•
	SCSI controller & device failure notification	•	•	•	•	•	•	•
	POST error notification	•	•	•	•	•	•	•
	Temperature & voltage warnings	•	•	•		•	•	•
	Fan failures for redundant fans	•	•	•			•	•
	Disk array diagnostic and predictive warnings	•	•		•	•	•	•
	SMART SCSI alerts	•	•		•	•	•	•
	ECC memory management	•	•	•		•	•	•
	DIMM memory management	•	•	•		•	•	•
	Redundant power supply— notification of switchover	•	•	•				•
	PC LAN adapter card monitoring and performance (Ethernet only)	•	•		•	•	•	•
	Redundant NIC failure notification	•	•		•	•	•	•
	APC UPS management	•	•		•	•	•	•
	Graceful NOS shutdown on shutdown event	•	•	•	•	•	•	•
	Chassis intrusion	•	•	•		•	•	•
Inventory Management								
	DMI browser	•	•		•	•	•	•
	System I/O (Ports/Bus)	•	•	•	•	•	•	•
	NIC, storage, memory	•	•	•	•	•	•	•
	Software/Driver versions	•	•		•	•	•	•
Special Features								
	Print report for support provider	•	•	•	•	•	•	•
	Links to HP support & reseller support page	•	•	•	•	•	•	•
	Review and add system notes	•	•	•	•	•	•	•
	Centralized agent distribution	•	•		•	•	•	•
	Automated scripts to install agents and HP Local TopTools for Servers	•	•		•	•	•	•
Standards Support								
	SNMP	•	•	•	•	•	•	•
	DMI 2.0	•	•	•		•	•	•
	WBEM/WMI				•	•	•	•
Offline Remote Management								
	HP TopTools Remote Control card D6028A	•	•	•		•	•	•
	Integrated Remote Assistant	•	•	•		•	•	•

Note: DMI Browser not available on NetWare 5.0.

Detailed Specifications

TopTools for Desktops & Notebooks

HP TopTools for Desktops and Notebooks Features

		VECTRA VE	VECTRA VL	BRIO	KAYAK	OmniBooks	Non HP PC (5)
Inventory Management	Remote and Central Inventory						
	Auto-discovery of devices	•	•	•	•	•	•
	Automated collection of inventory (10)	•	•	•	•	•	•
	PC Search and Selection	•	•	•	•	•	•
	Reports (including asset location, configuration, ..)	•	•	•	•	•	•
	Reports (including Year 2000 compliance, drivers..)	•	•		•	•	
	Access to detailed configuration information	•	•		•	•	
	Access to non-HP web based management agent (9)	NA	NA	NA	NA	NA	•
Configuration Management	Customizable Asset string		•		•	•	
	Remote Boot Control						
	system reboot		•		•	•	
	system power-off		•		•		
	system power-on	• ⁶	•	• ⁶	•		• ⁶
	Remote and Central System Software updates						
	Bios update		•		•	• ¹¹	
	Drivers update (Video, HDD and LAN card)		•		•		
Fault Management	hardware diagnostics software update (HP-DiagTools)	•	•		•	•	
	Local Fault diagnostics						
	hardware diagnostics (HP DiagTools)	•	•	•	•	•	
	smart card and smart card reader diagnostics	•	•		•	•	
	Lan card diagnostics (8)	•	•	•	•	NA	
	Remote and Local alerts reporting						
	Power On Self Test (POST)		•		•	•	
	16 & 32 bits application crash protection (1)	•	•		•	•	
	HDD capacity monitoring (1)	•	•		•	•	
	Memory usage monitoring (1)	•	•		•	•	
	HDD fragmentation control (W9x)(1)	•	•		•	•	
	Chassis Intrusion detection		•		•	•	• ⁷
	IDE HDD SMART failure warning	•	•	• ⁷	•	•	• ⁷
	Virus detection (2)	•	•	• ⁷	•	•	•
	Fan speed monitoring				•		
	Voltage monitoring				•		
	Temperature monitoring				•		
	Remote access to status information						
	Memory error	•	•		•	•	
	Network interface Status and activity (3)	•	•	•	•	•	•
	Network interface Statistics (3)	•	•	•	•	•	•
	Services (4)	•	•	•	•	•	•
	Current Processes (4)	•	•	•	•	•	•
	Device drivers (4)	•	•	•	•	•	•
	Memory utilization (4)	•	•	•	•	•	•
	Logical drives utilization (4)	•	•	•	•	•	•

TopTools for Desktops & Notebooks Cont...

HP TopTools for Desktops and Notebooks Features

		VECTRA VE	VECTRA VL	BRIO	KAYAK	OmniBooks	Non HP PC (5)
Security Management	Remote and central system Boot configuration						
	Enable/Disable start from hard-disk		•		•	•	
	Enable/Disable start from floppy-disk		•		•	•	
	Enable/Disable start from CD-ROM drive		•		•	•	
	Enable/Disable start from Network drive		•		•	•	
	Enable/Disable Remote Power On & Wake On Lan		•		•	•	
	Remote and central Security configuration						
	Enable /Disable floppy-disk drive		•		•	•	
	Enable/Disable writing on floppy-disk drive		•		•	•	
	Enable/Disable serial & parallel ports		•		•	•	
	Enable/Disable universal serial bus (USB) ports		•		•	•	
	Remote and Central Security Control						
	Complete System lock		•		•	•	
	System protection (power-on & reset buttons)		•		•	•	
	Remote and Central Security Management						
	Enable/Disable Start with keyboard locked		•		•	•	
	System Administrator & user password change		•		•	•	
	Enable/Disable user password on power-on		•		•	•	
	System SNMP community password change (3)	•	•	•	•	•	•
	Report of PCs not password protected	•	•		•	•	
	Smart Card Management						
	Inventory Of Smart Card Readers	•	•		•	•	
	Local Diagnostic of Smart Card and Reader	•	•		•	•	

¹ Requires McAfee Crash Monitor to be installed (Bundled with Vectra PCs)

² Requires McAfee VirusScan to be installed (Bundled with Vectra PCs)

³ Requires SNMP services to be installed

⁴ Requires WBEM/WMI services to be installed

⁵ DMI 2.0 and WfM 1.1 compliant PCs

⁶ If LAN card support RPO

⁷ If feature supported in the PC

⁸ With 3Com card only

⁹ IBM and Compaq

¹⁰ Attributes depend on the DMI implementation of the PC

¹¹ Windows 9x only

Detailed Specifications

Managing HP Printers with HP TopTools and Web JetAdmin	
For Web JetAdmin 4.0 and greater when integrated with TopTools:	
<i>Microsoft NT and Novell NetWare Platforms</i>	
Hardware	Pentium 66 or faster 32 MB RAM, 25 MB available disk space
Software	NT 4.0 Server and Workstation with service pack 3 or higher
	NT 3.51 Server and Workstation with service pack 5 or higher
<i>HP-UX Platforms</i>	
Hardware Series 700, 800	64 MB RAM
	30 MB available disk space
Software	HP-UX 10.2 Series 700, 800
	HP-UX 11.x Series 700, 800
<i>Solaris Platforms</i>	
Hardware	SPARCstation
	64 MB RAM
	30 MB available disk space
Software	Solaris 2.5, 2.5.1, 2.6
<i>OS/2</i>	
Hardware	486 50 MHz or faster
	16 MB RAM
	25 MB available disk space
Software	IBM OS/2 Warp 3.0 and LAN Server 4.0
	IBM OS/2 Warp Connect
	IBM OS/2 Warp Server
	IBM OS/2 Warp 4.0
	IBM SpoolerPak version 8.253 must be installed
For Web JetAdmin 5.1 when integrated with TopTools:	
<i>Linux</i>	
Hardware	See Red Hat requirements
Software	Red Hat versions 5.0, 5.1 and 5.2
<i>Supported Browsers</i>	
	Microsoft Internet Explorer 4.01

NOTE: Web JetAdmin may be installed on a server with any of the above operating systems. Integration of Web JetAdmin with HP TopTools does not require Web JetAdmin to be installed on the TopTools management server. All that is required for integration is that the URL of Web JetAdmin be entered into the HP TopTools management server.

Detailed Specifications

Management Platform Integration						
		Servers/Managed Devices			Clients	
		Novell NetWare 3.2, 4.11	Microsoft NT 3.51, 4.0 (incl. SMP)	SCO UNIX OpenServer 5.2	Desktops	Laptops
Integration with TopTools is available for these management products						
	HP OpenView NNM/NT	\$	\$	\$	\$	\$
	HP OpenView NNM/UX	\$	\$	\$	\$	\$
	CA Unicenter TNG	\$	\$	\$	\$	\$
	HP OpenView ManageX 4.0	*	*			
	NetIQ AppManager		*			
	HP OpenView DTA				*	*
	Microsoft SMS				*	*
	Tivoli NetView	\$	\$	\$	\$	\$
	Tivoli TME	*	*	*	*	*

\$ = Fee

* = Free Integration

HP TopTools award winning integration links HP TopTools device management into enterprise management products with the following extensions to HP TopTools

Part No.	Description	List Price
D7119A	HP TopTools for Unicenter TNG	\$4,995
D7120A	HP TopTools for OpenView NNM-NT	\$4,995
D7121A	HP TopTools for OpenView NNM-UX	\$4,995
D7123A	HP TopTools for Tivoli NetView	\$4,995

To obtain a free 60-day evaluation CD, visit www.hp.com/toptools/entweb.html

HP TopTools QuickStart Service*

Hewlett-Packard has been providing a comprehensive suite of services in the areas of design, implementation and management of systems and networks for years. During this period, Hewlett-Packard has developed and refined a manageability methodology that has benefited thousands of customers worldwide. HP TopTools QuickStart service allows you to quickly access TopTools productivity-enhancing features by allowing a trial implementation supported by HP leading to a faster and more cost effective overall implementation.

HP TopTools QuickStart Benefits:

- Straightforward and rapid installation of a base environment
- Hands-on learning experiences and HP knowledge transfer to expanded skills and capabilities for your IT professionals
- A master pattern for you to replicate across your environment
- Continued deployment at your pace, or have HP professionals continue on your behalf
- Low investment approach to gain the high returns associated with HP TopTools

HP TopTools Quick-Start will result in:

- Reduced implementation time
- A framework to give you full access to HP TopTools capabilities -- greater control of your IT environment reduced total cost of ownership and increased availability
- Greater capabilities to proactively manage your IT environment
- Faster problem resolution
- Shared tips and tricks
- Help to avoid problem areas
- Experience and confidence to continue deployment throughout the organization.

HP TopTools Value Pack**

The HP TopTools Value Pack expands the functionality of the free version of TopTools by including enhanced action-on-alerts, paging, custom inventory reports and support for larger environments (up to 5,000 nodes).

Part No.	Description	List Price
D7160A	TopTools Value Pack	\$995

HP TopTools is available from the following sources

Ships with HP NetServers and HP Hubs and Switches

Downloadable for free from the Web at www.hp.com/toptools
(requires internet connection during the download and installation process)

Order a TopTools CD from the Web at www.hp.com/toptools

* The QuickStart Service is available in limited geographical locations

** Available from HP-authorized resellers

STAY IN TOUCH
www.hp.com/go/netserver

For The Latest Manageability Information

HP TopTools	www.hp.com/TopTools
HP NetServers	www.hp.com/go/netserver
HP NetServer Management	www.hp.com/go/netserver_mgmt
HP Vectras	www.hp.com/desktop/manage
HP Kayaks	www.hp.com/kayak/manage
HP OmniBooks	www.hp.com/omnibook
HP Printers	www.hp.com/go/webjetadmin
HP Hubs & Switches	www.hp.com/go/procurve
HP FAX Response system	1-800-333-3333(U.S.) 1-333-333-3333 (worldwide from fax only)

IBM and OS/2 are registered trademarks of IBM Corporation. Intel and Pentium are U.S. registered trademarks of, and Xeon is a trademark of, Intel Corporation. Microsoft and Windows NT are registered trademarks of Microsoft Corporation. Novell and NetWare are registered trademarks of, and IntranetWare is a trademark of, Novell, Inc. OpenView is a trademark of Hewlett-Packard Company. SCO and UnixWare are registered trademarks of, and OpenServer is a trademark of, The Santa Cruz Operation. All other brand names are trademarks of their respective owners.

Information in this document is subject to change without notice.

© Copyright Hewlett-Packard Company 1999. All Rights Reserved. Reproduction, adaptation, or translation without prior written permission is prohibited, except as allowed under the copyright laws.

Printed in USA M0299 P/N 5968-3762EUC