

HP Vectra VL 6/xxx Series 6 PC

Models and Accessories

Product Number	Cache Memory	Hard Drive	Video Controller	Std. RAM	Multi-media	LAN	OS ¹
Vectra VL 6/xxx Series 6 PC							
HP Vectra VL 6/233 Series 6 PC (CPL: 7/97 ►)							
D5042N	512 KB	2.5 GB IDE	Integrated Cirrus 5446 (2 MB video memory fitted, not upgradable)	32 MB EDO 60 ns	no	no	Win 95
D5042W							NT 4.0 WS
HP Vectra VL 6/266 Series 6 PC (CPL: 7/97 ►)							
D5043N/T	512 KB	2.5 GB IDE	Integrated Cirrus 5446 (2 MB video memory fitted, not upgradable)	32 MB EDO 60 ns	no	no	NT 4.0 WS
D5043W							Win 95
D5044N		4 GB IDE	Matrox MGA Millennium II board, (4 MB, upgradeable to 8 MB)		24 X Max IDE CD-ROM and ISA Plug-n-Play Audio Board	NT 4.0 WS	
D5045N	512 KB	2.5 GB IDE	Integrated Cirrus 5446 (2 MB video memory fitted, not upgradable)				yes

1. Windows NT 4.0 WS or Windows 95 operating system is preloaded on those models indicated in the table. Models with Windows NT 4.0 WS operating system come with a downgrade coupon for Windows NT 3.51 or Windows 95.



HP Vectra VL 6/xxx Series 6 PC

Product Number	Cache Memory	Hard Drive	Video Controller	Std. RAM	Multi-media	LAN	OS ¹
HP Vectra VL 6/300 Series 6 PC (CPL: 7/97 ▶)							
D5435N	512 KB	4 GB IDE	Integrated Cirrus 5446 (2 MB video memory fitted, not upgradable)	32 MB EDO 60 ns	no	no	NT 4.0 WS

1. Windows NT 4.0 WS or Windows 95 operating system is preloaded on those models indicated in the table. Models with Windows NT 4.0 WS operating system come with a downgrade coupon for Windows NT 3.51 or Windows 95.



Supported Accessories

32-MB kit (2 × 16-MB) 32-bit EDO, 60 ns main memory modules	D3648B
64-MB kit (2 × 32-MB) 32-bit EDO, 60 ns main memory modules	D4543A
128-MB kit (2 × 64-MB) 32-bit EDO, 60 ns main memory modules	D5188A ¹
20 × 16-MB, 32-bit EDO, 60 ns main memory modules	D3649A
4 MB, 50 ns video memory upgrade kit for Matrox Millennium II board	D5487A

Documentation

User's Guide Manual Kit	D5040A
-------------------------	--------

Input Devices

HP mouse	C3751B
HP keyboard for Windows® 95	C4735A

Video Displays

All current HP Displays (see the *HP Vectra Accessory Service Handbook*)

Mass Storage

ZIP 100 MB IDE Disk Drive	D4390A
2.5-GB IDE hard disk	D2678A
4.3-GB IDE hard disk	D2677A
24× Max IDE CD-ROM drive	D4383A

Multimedia

Multimedia sound accessory kit (24× Max CD-ROM drive, Plug-and-Play ISA audio board, headphones, cables, CD-ROM drive tray)	D5182A
---	--------

1.

The PC's BIOS must be of version HD.07.03 or later for the D5188A memory accessory to work correctly. The version number is displayed when you start your PC. If necessary, download the latest version of the HP Vectra VL6 Series 6 BIOS from <http://www.hp.com/go/vectrasupport>.

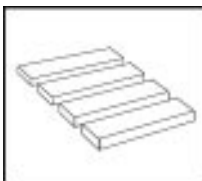


HP Vectra VL 6/xxx Series 6 PC

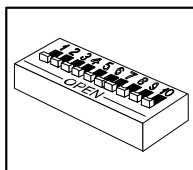
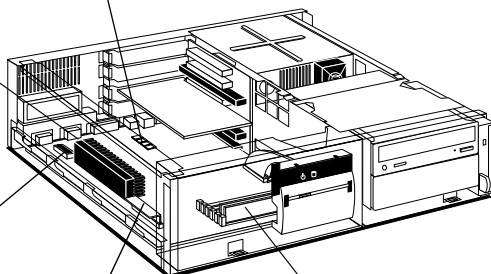
System Board, BIOS, and Memory



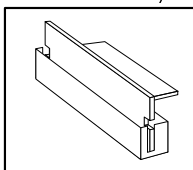
Processor: Pentium II module with integrated heatsink, level-1 and level-2 cache memory.



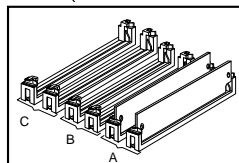
Video Memory: 2 MB on models with integrated graphics. This is not upgradeable since it is fully populated already.



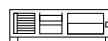
System Board Switches: See the table on the next page.



VRM: Always use the VRM that is supplied with the processor.



Main Memory: 1 bank containing a pair of 16 MB modules. Install pairs of identical modules in each bank, up to a maximum of 192 MB.



System Board Switches

Switch		Function	Default
1-5	-	Processor frequency, see the following table	-
6	Open	Normal operation	Open
	Closed	Clears CMOS (to reload the <i>Setup</i> program defaults)	
7	Open	Normal operation	Open
	Closed	Clears User and Administrator passwords	
8	Open	Disables keyboard power-on	Closed
	Closed	Normal operation	
9	Open	Not used	Open
10	Open	Normal operation	Open
	Closed	Clears product identification field	

Processor Frequency	Switch		Local Bus Frequency	Switch			Frequency Ratio Processor : Local Bus
	1	2		3	4	5	
200 MHz ¹	Open	Open	66 MHz	Open	Closed	Open	3 : 1
233 MHz	Open	Open	66 MHz	Open	Closed	Closed	3.5 : 1
266 MHz	Open	Open	66 MHz	Closed	Open	Open	4 : 1
300 MHz ¹	Open	Open	66 MHz	Closed	Open	Closed	4.5 : 1
333 MHz ¹	Open	Open	66 MHz	Closed	Closed	Open	5 : 1

1. Switch settings if these processor frequencies become available.

BIOS History

For the latest BIOS, the flasher utility program, and the BIOS history refer to the HP World Wide Web site.

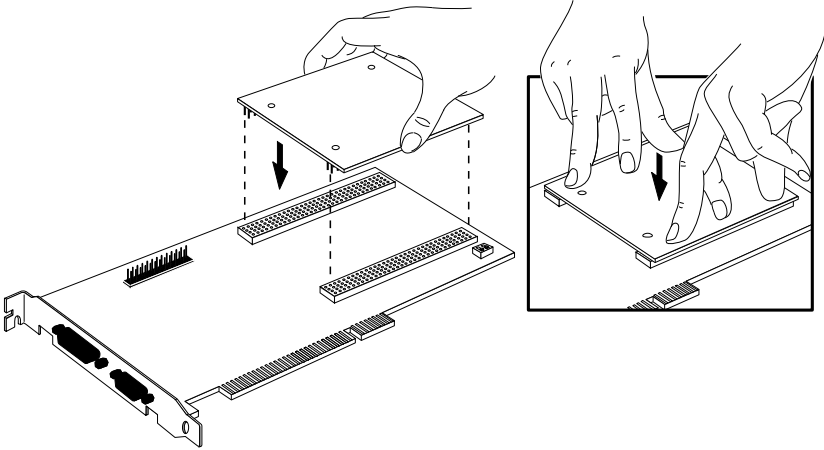
<http://www.hp.com/go/vectrasupport>



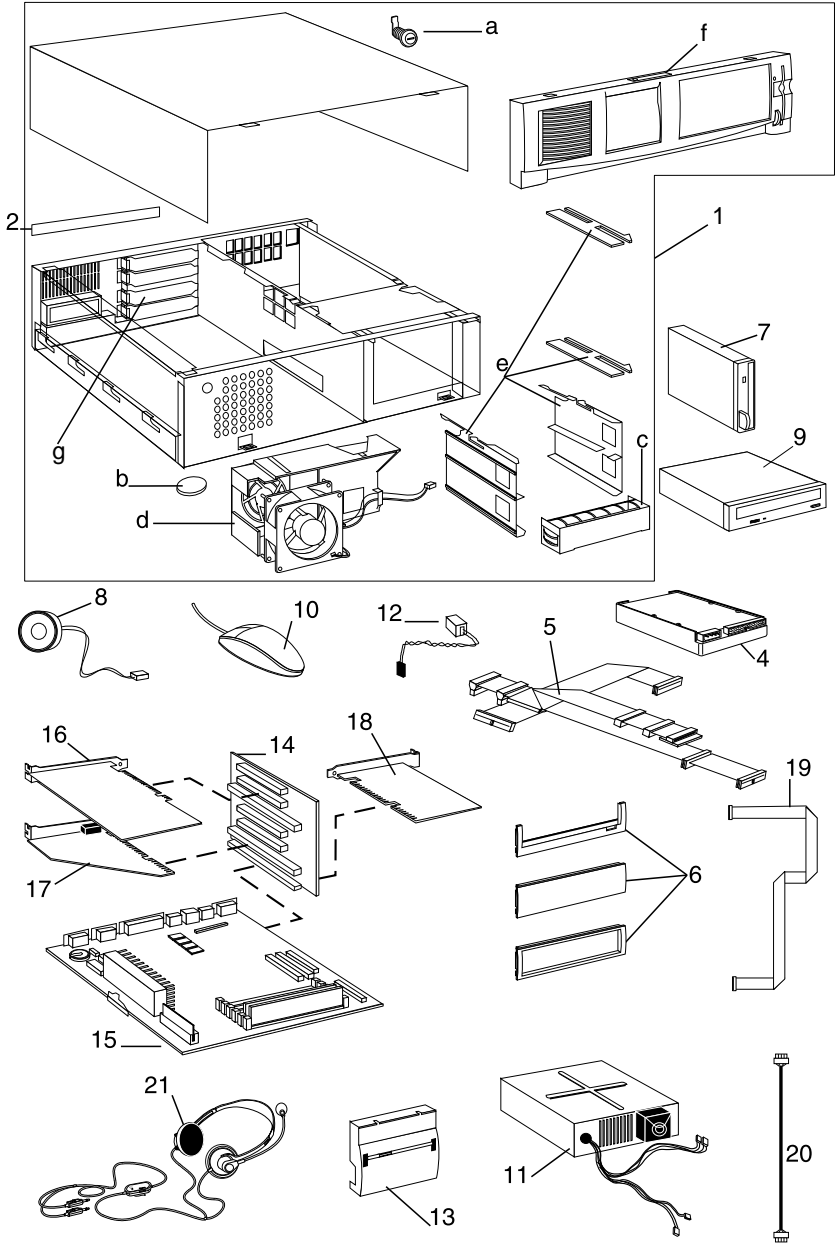
HP Vectra VL 6/xxx Series 6 PC

Matrox Millennium II Video Memory Upgrade

Models with the Matrox MGA Millennium Pro graphics controller are supplied with 4 or 8 MB of video memory. A 4 MB video memory upgrade module can be ordered from HP (D5487A).



Part Numbers



16



HP Vectra VL 6/xxx Series 6 PC

Parts List for HP Vectra VL 6/xxx Series 6 PC

Item	Description	Repl. Part Number	Exchange Part Number
1	Box assembly: a Cover lock assembly b Bumper foot c RFI filler plate (5.25 inch) d Fan / HP holder assembly e CD-ROM drive/FDD holder kit f Front bezel assembly g I/O panel blank	5064-3609 5062-5590 5181-0394 5002-1970 5064-3608 5064-2664 5064-3348 45935-00004	—
2	Rear bezel connector label	5042-2420	—
not shown	Air flow guide	5042-2464	—
4	IDE hard disk drive (standard) ¹ 2.5 GB 2.5 GB 4.3 GB 4.0 GB 6.4 GB	— — — — —	D2678-69001 D2686-69003 D2677-69001 D2687-69001 D5191-69001
5	IDE and FDD cable kit	5064-2676	—
6	Filler kit	5064-6701	—
7	Flexible disk drive (bezelless)	D2035-60172	—
8	Internal speaker	5063-4559	—
9	24X Max IDE CD-ROM drive	D4383-63001	D4383-69001
10	Mouse Keyboard	C3751-60201 C4735-601xx ²	— —
11	Power supply	0950-2693	—
12	3 V external battery	1420-0552	—
13	Status panel Multimedia control panel	5064-2697 5064-2698	— —
14	Double-sided backplane board	5064-0243	—
15	System board	See PC's system board parts list	
16	Matrox Millennium II board 4 MB 250 MHz	—	D3568-69103
17	Audio board	5064-2620	—
18	10/100BT LAN board (10BT Remote Power On, 100BT Remote Wake Up) 10/100BT LAN board, full RPO	5064-1802 —	 D3999-69001

1. For optional disk drive information, see the *Accessory Service Handbook*.
2. Where “xx” is the code for your national keyboard (see the *Accessory Service Handbook*).



HP Vectra VL 6/xxx Series 6 PC

Parts List for HP Vectra VL 6/xxx Series 6 PC (continued)

Item	Description	Repl. Part Number	Exchange Part Number
19	Internal network cable	5183-0758	
20	CD-ROM to audio board cable	5182-1857	—
21	Headphones	5182-3552	—

System Board Parts List for HP Vectra VL 6/xxx Series 6 PC

Description	Repl. Part Number	Exchange Part Number
System board: Vectra VL 6/xxx system board with video	—	D5041-69001
Processors: Intel Pentium II 233/512	5064-2651	—
Intel Pentium II 266/512	5064-2652	—
Intel Pentium II 300/512	5064-3330	—
VRM, Voltage regulator module	0950-3310	—
Main memory modules: 2 × 8-MB main memory 60-ns EDO RAM	D3647-63001	—
2 × 16-MB main memory 60-ns EDO RAM	D3648-63001	—
2 × 32-MB main memory 60-ns EDO RAM	D4543-63001	—
Video memory module: 4 MB Matrox video memory (WRAM) upgrade kit	D5487-63001	—
Batteries: 3 V system board battery (type 2032)	1420-0314	—

Manuals and Documentation for HP Vectra VL 6/xxx Series 6 PC

<i>User's Guide</i>	D5040-90001
<i>Familiarization Guide</i>	D5040-90901
<i>Technical Reference Manual: hardware and BIOS</i>	no number ¹

1. Electronic file only.

Notes: _____



HP Vectra VL 6/xxx Series 6 PC

16

