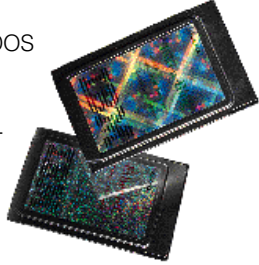


IBM LAN Adapters

No matter what your environment, Ethernet or Token-Ring, IBM offers a breadth of high-quality network adapters in a variety of bus types and speeds.

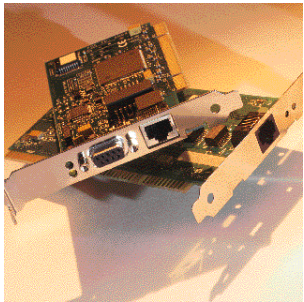
Some of our adapters include Wake on LAN*, the cornerstone technology of IBM's network management capabilities, which offers a cost-saving means to remote systems management. Wake on LAN can help you increase your productivity by eliminating the downtime that can cripple a business.

With their high performance and low DOS memory utilisation, our Token-Ring adapters are ideal for client-server applications. They offer automatic ring-speed detection and LED status indicators for smooth, uninterrupted operation of your network.



Our Ethernet adapters are an affordable alternative, especially as network and bandwidth demands increase. Available in PCI and PC Card bus type, they use Full-Duplex mode to allow simultaneous transmission and reception, effectively doubling your bandwidth without doubling your cost. Full-Duplex is also supported on our Token-Ring Adapters.

Naturally, IBM is committed to supporting migration paths in both Token-Ring and Ethernet environments. Options by IBM delivers cost-effective solutions from the desktop to the enterprise backbone to the wide area environment. Whether you need to access an office database from a colleague's system or tap into a worldwide sales programme from a



massive corporate headquarters a continent away, Options by IBM has the right network adapter solution for you.



IBM Eurocoordination

Tour Descartes
F-92066 Paris La Defense Cedex
France

The IBM home page can be found on the Internet at www.ibm.com/pc/europe

IBM is a registered trademark of International Business Machines Corporation.

* Wake on LAN, LAN Client and OS/2 are trademarks of International Business Machines Corporation.

† Requires 86H2856.

Other company, product or service names may be trademarks or service marks of others.

References in this publication to IBM products, programs or services do not imply that IBM intends to make these available in all countries in which IBM operates. Any reference to an IBM product, program or service is not intended to imply that only IBM's product, program or service may be used. Any functionally equivalent product, program or service may be used instead.

IBM hardware products are manufactured from new parts, or new and used parts. In some cases, the hardware product may not be new and may have been previously installed. Regardless IBM warranty terms apply.

This publication is for general guidance only. Photographs may show design models.

Printed in England by Carwin Ltd.

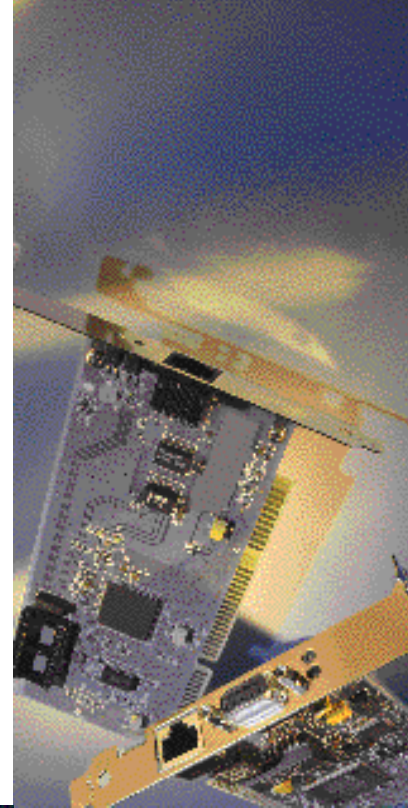
© International Business Machines Corporation 1998.

OGEE203 (04/98)

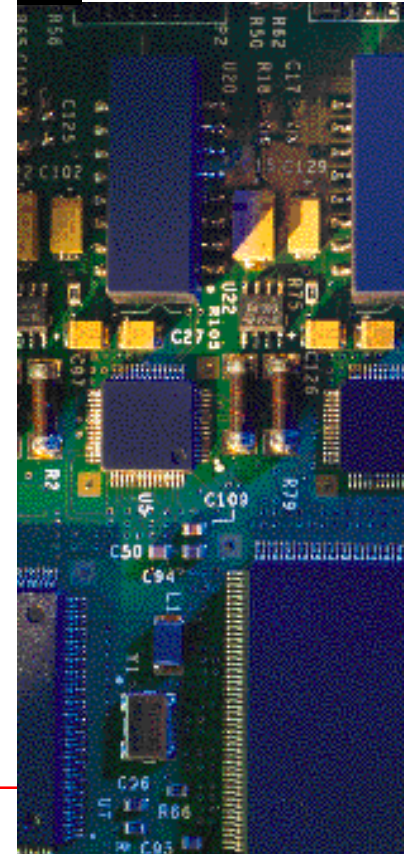
Options by IBM

LAN Adapters

Quick Reference



April 1998



ISO Crop Mark

Fold

Fold

**Token-Ring Adapter Highlights**

	PCI Token-Ring Adapter	PCI Wake on LAN Token-Ring Adapter	Turbo 16/4 Token-Ring ISA Adapter	Auto Wake Token-Ring ISA Adapter	Turbo 16/4 Token-Ring PC Card
Part numbers					
English single	75H9802	86H1880	72H3501	55H6783	85H9139 (5 pack: 01L1980)
German single	85H3414		72H3516		85H9180 (5 pack: 01L1982)
Spanish single	85H3412		72H3518		85H9181 (5 pack: 01L1981)
Card pack (no pubs/software)	85H3410	86H1886	72H3514	55H6815	
CD-ROM pack (pubs/software on CD)	75H9800				
36 pack	85H3409	86H1887	72H3495	55H6807	
Bus type	PCI	PCI	ISA	ISA	PC Card
Connectors	Single RJ-45/ 9 Pin D-Shell	Single RJ-45/ 9 Pin D-Shell	Single RJ-45/ 9 Pin D-Shell	Single RJ-45/ 9 Pin D-Shell	Single RJ-45
Features					
LEDs	•	•	•	•	•
Auto-speed adjust	•	•	•	•	•
Full-duplex enabled	•	•	•	•	•
Remote program load	•	•	•	•	•
DOS, Windows or OS/2* clients	•	•	•	•	•
LAN Client*	•	•	•	•	•
Wake on LAN	•	•	•	•	•
Software configurable	•	•	•	•	•

**Ethernet Adapter Highlights**

	IBM 10/100 EtherJet PCI Adapter with Wake on LAN	IBM 10/100 EtherJet PCI Adapter	EtherJet PC Card 10Base-T Adapter	EtherJet PC Card Combo 10Base-T/10Base2 Adapter	IBM 10/100 EtherJet Card Bus Adapter
Part numbers					
English single	08L2565	08L2549	72H4552	72H4553	08L3147 (5 pack: 08L3162)
German single			72H4562	72H4563	
Spanish single			72H5125	72H5126	
English 20 pack	08L2567	08L2555			
English 100 pack	08L2568	08L2554			
RPL/DHCP option		86H2856			
Bus type	PCI	PCI	PC Card	PC Card	CardBus
Connectors	Single RJ-45	Single RJ-45	10Base-T	10Base-T/10Base2	Single RJ-45
Features					
LEDs	•	•	•	•	•
Full-duplex enabled	•	•	•	•	•
Remote program load	•	• ¹	•	•	•
DOS, Windows or OS/2 clients	•	•	•	•	•
LAN Client	•	•	•	•	•
Wake on LAN	•	•	•	•	•

ISO Crop Mark**Fold****Fold**