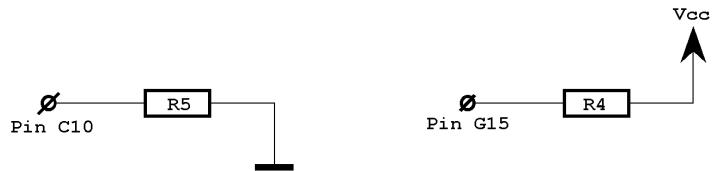
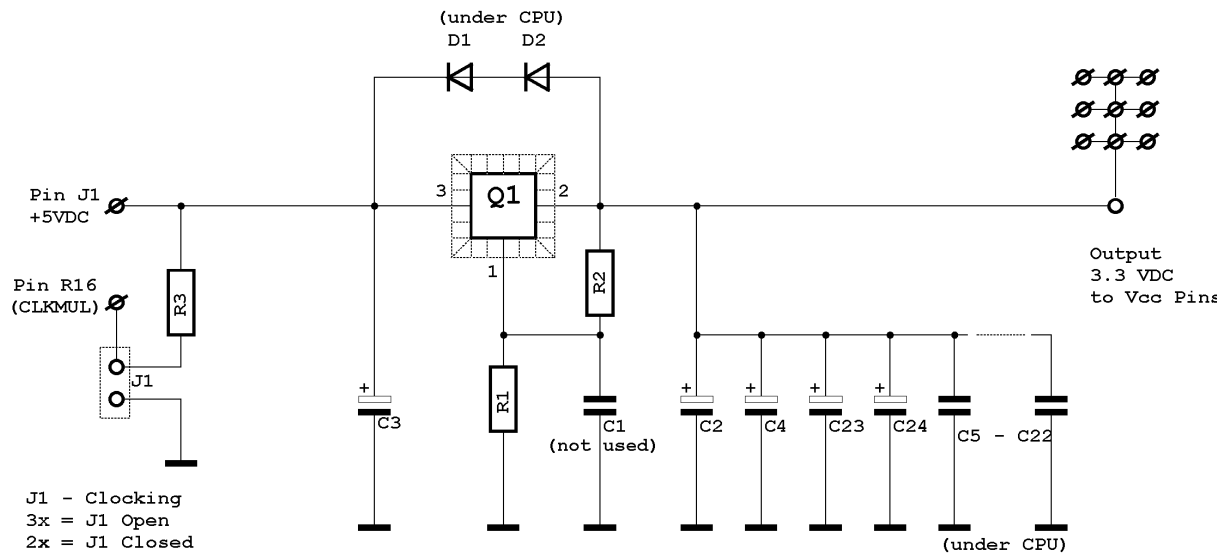


# REPLY DX4 Interposer

## Voltage Regulator



R1 = 210R, 1%, 0.25 W  
R2 = 121R, 1%, 0.25W  
R3 = 4K7R  
R4 = 4K7R  
R5 = 100R

Q1 = LT1085CM  
D1 = BA41 (SMD)  
D2 = BA41 (SMD)

C2, C3 = 33uF, 16V (SMD)  
C23, C24 = 33uF, 16V (SMD)  
C5 - 22 = 4n7F, (A4 - SMD)

C1 is not used

# REPLY DX4 Interposer (Underside View)

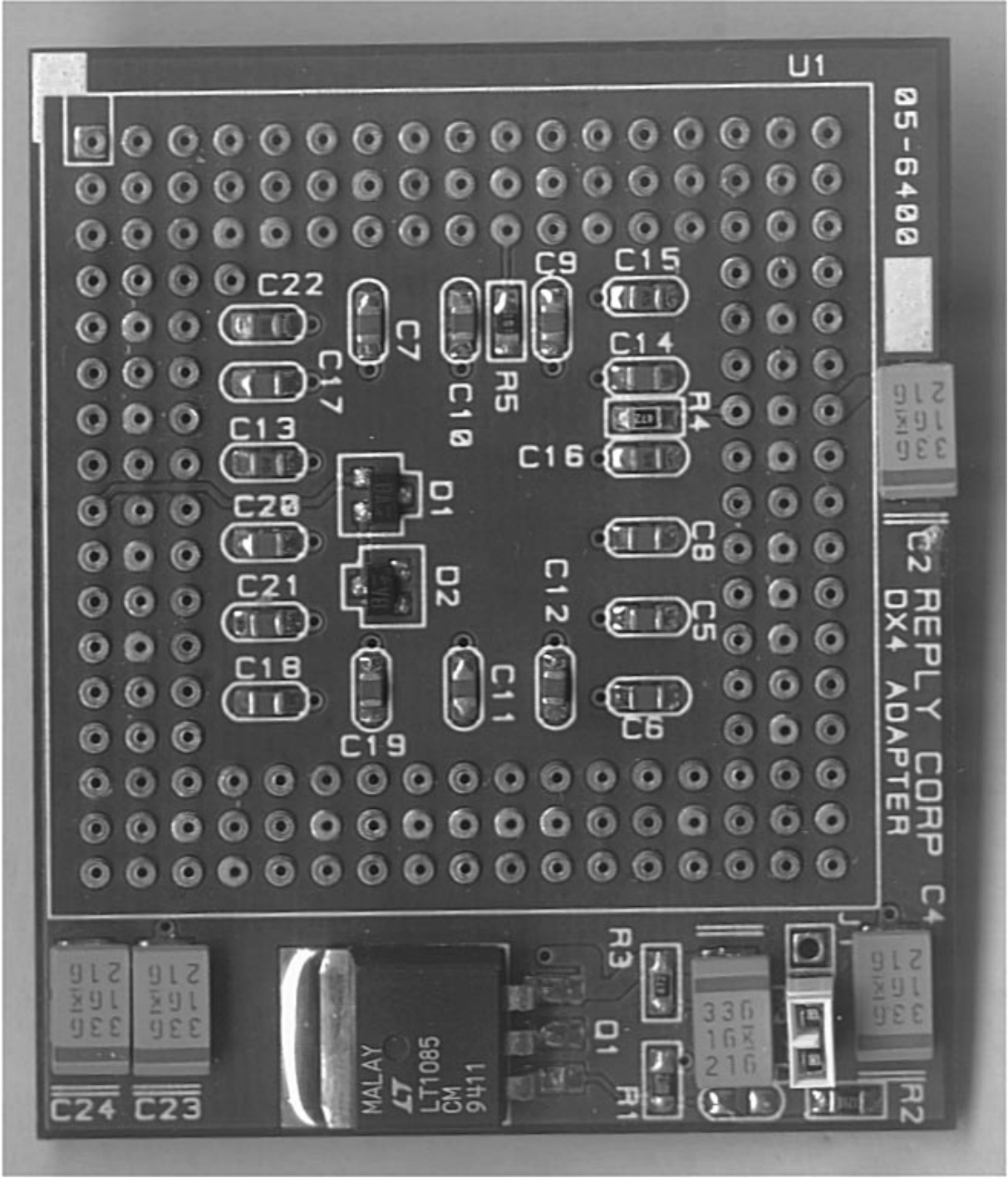
	17	16	15	14	13	12	11	10	9	8	7	6	5	4	3	2	1	
<b>A</b>	AHOLD ○	INTR ○	IGNNE ○	TDI ○	N.C. ○	N.C. ○	GND □	N.C. ○	GND □	D29 ○	GND □	D24 ○	DP3 ○	D23 ○	TCK ○	D22 ○	D20 ○	<b>A</b>
<b>B</b>	EADS ○	TDO ○	NMI ○	TMS ○	AMDCLK ○	N.C. ○	Vcc ■	Vcc ■	Vcc ■	D31 ○	Vcc ■	D25 ○	GND □	GND □	GND □	D21 ○	D19 ○	<b>B</b>
<b>C</b>	BS16 ○	RESET ○	FLUSH ○	FERR ○	N.C. ○	N.C. ■	UP ○	N.C. ■	D30 ○	D28 ○	D26 ○	D27 ○	Vcc ■	Vcc ■	CLK ○	D18 ○	D11 ○	<b>C</b>
<b>D</b>	BOFF ○	BS8 ○	A20M ○												D17 ○	D13 ○	D9 ○	<b>D</b>
<b>E</b>	GND □	Vcc ■	HOLD ○												D10 ○	Vcc ■	GND □	<b>E</b>
<b>F</b>	BE3 ○	RDY ○	KEN ○												D15 ○	D8 ○	DP1 ○	<b>F</b>
<b>G</b>	GND □	Vcc ■	N.C. ○												D12 ○	Vcc ■	GND □	<b>G</b>
<b>H</b>	GND □	Vcc ■	BRDY ○												DP2 ○	D3 ○	GND □	<b>H</b>
<b>J</b>	PCD ○	BE1 ○	BE2 ○												D16 ○	D5 ○	INC ○	<b>J</b>
<b>K</b>	GND □	Vcc ■	BE0 ○												D14 ○	Vcc ■	GND □	<b>K</b>
<b>L</b>	GND □	Vcc ■	PWT ○												D7 ○	D6 ○	GND □	<b>L</b>
<b>M</b>	GND □	Vcc ■	D/C ○												D4 ○	Vcc ■	GND □	<b>M</b>
<b>N</b>	W/R ○	M/TO ○	LOCK ○												DP0 ○	D1 ○	D2 ○	<b>N</b>
<b>P</b>	GND □	Vcc ■	HLDA ○												A30 ○	A29 ○	D0 ○	<b>P</b>
<b>Q</b>	FCHK ○	PLCK ○	BREQ ○	A2 ○	A7 ○	A5 ○	A9 ○	A13 ○	A16 ○	A20 ○	A22 ○	A24 ○	A21 ○	A19 ○	A17 ○	GND □	A31 ○	<b>Q</b>
<b>R</b>	CLKMULBLAST ■		A3 ○	Vcc ■	A8 ○	A11 ○	Vcc ■	Vcc ■	Vcc ■	Vcc ■	A15 ○	Vcc ■	A18 ○	GND □	Vcc ■	A25 ○	A28 ○	<b>R</b>
<b>S</b>	ADS ○	A4 ○	A6 ○	GND □	A10 ○	GND □	GND □	GND □	GND □	GND □	A12 ○	GND □	A14 ○	VOLDET ■	A23 ○	A26 ○	A27 ○	<b>S</b>
	17	16	15	14	13	12	11	10	9	8	7	6	5	4	3	2	1	

Pin 1

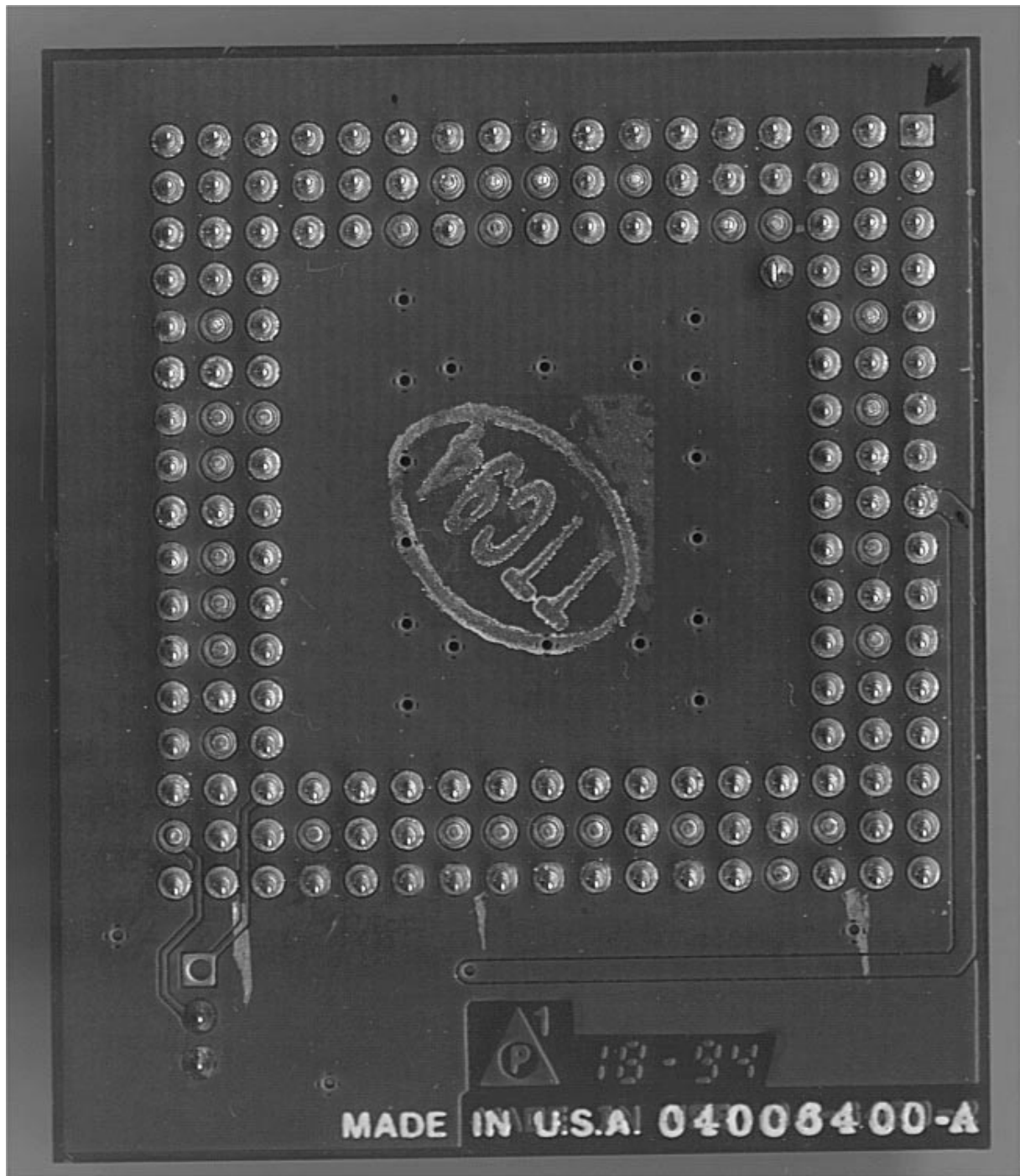


- = GND - Pin (Vss)
- = Normal Pin
- = Removed Pin (mainly Vcc)

Attention: Pin B13 is CLKMUL on AMD enhanced 486DX !



-Topside View-



**-View on Pins-**