



System Migration Assistant

User Guide

00N-4006-1

Note

Before using this information and the product it supports, be sure to read the information in Appendix A, “Notices and Trademarks” on page 31.

First Edition (February 1999)

The following paragraph does not apply to the United Kingdom or any country where such provisions are inconsistent with local law: INTERNATIONAL BUSINESS MACHINES CORPORATION PROVIDES THIS PUBLICATION “AS IS” WITHOUT WARRANTY OF ANY KIND, EITHER EXPRESS OR IMPLIED, INCLUDING, BUT NOT LIMITED TO, THE IMPLIED WARRANTIES OF MERCHANTABILITY OR FITNESS FOR A PARTICULAR PURPOSE. Some states do not allow disclaimer of express or implied warranties in certain transactions, therefore, this statement may not apply to you.

This publication could include technical inaccuracies or typographical errors. Changes are periodically made to the information herein; these changes will be incorporated in new editions of the publication. IBM may make improvements and/or changes in the product(s) and/or the program(s) described in this publication at any time.

This publication was developed for products and services offered in the United States of America. IBM may not offer the products, services, or features discussed in this document in other countries, and the information is subject to change without notice. Consult your local IBM representative for information on the products, services, and features available in your area.

Requests for technical information about IBM products should be made to your IBM reseller or IBM marketing representative.

© Copyright International Business Machines Corporation 1999. All rights reserved.

Note to U.S. Government Users — Documentation related to restricted rights — Use, duplication or disclosure is subject to restrictions set forth in GSA ADP Schedule Contract with IBM Corp.

Contents

Chapter 1. Overview and Concepts of System Migration Assistant	1
Overview	2
Supported Client Systems	2
Supported Operating Systems	2
Basic Operation	3
Interface Components	3
Concepts	4
Personality Settings	4
Connectivity Settings	4
Data Files	4
Printer Settings	5
System Migration Assistant File Types	5
Chapter 2. Installing and Running System Migration Assistant	7
Installing System Migration Assistant	8
Prerequisites	8
Installing System Migration Assistant	8
Running System Migration Assistant	9
Exiting from System Migration Assistant	10
Removing System Migration Assistant	10
Chapter 3. Understanding the Interface	11
System Migration Assistant window	12
Save/Load/View Settings	12
Current Settings window	13
Configuration Editor window	13
Personality Settings	15
Connectivity Settings	16
Data Files window	17
Report window	17
Command Line Syntax	19
Chapter 4. Using Systems Migration Assistant	21
Creating a Configuration File	22
Creating a Migration File	23
Enabling a Migration	24
Using SMA with LANClient Control Manager	26
Appendix A. User Assistance	29
SMA Support Form	29
SMA Users Forum	29
Appendix A. Notices and Trademarks	31
Notices	31
Trademarks	31
Index	33

About This User's Guide

This *User Guide* will help you become more familiar with IBM's System Migration Assistant. Included in this guide are procedures that help explain this product.

This product allows for the migration of a Microsoft Windows desktop personality and network connectivity to another client system. However, use of this product does not grant any additional license to copy, install, or use any other application software or operating system not already granted by existing licenses.

This guide is organized as follows:

- Chapter 1, "Overview and Concepts of System Migration Assistant," contains an introductory overview of the purpose and features of System Migration Assistant. Much of the System Migration Assistant terminology is established in this section. Also included are lists of supported IBM systems and supported operating systems.
- Chapter 2, "Installing and Running System Migration Assistant," contains instructions on how to install, start, and exit from System Migration Assistant. Uninstalling System Migration Assistant is included in this section.
- Chapter 3, "Understanding the Interface," provides a graphical view of System Migration Assistant screens with accompanying descriptions.
- Chapter 4, "Using System Migration Assistant," provides step-by-step procedures associated with System Migration Assistant. Included is a section on using System Migration Assistant with LANClient Control Manager (LCCM) for advanced Life-cycle product deployment.

Also included is a User Support section, and a "Notice and Trademarks" section.

Who Should Read this Guide

This guide is intended to help client systems administrators understand the concepts and features of System Migration Assistant. The step-by-step procedures are provided to help administrators use this product.

To effectively use this guide, you should have an extensive knowledge of the Microsoft Windows desktop environment and the operating system Registry program.

How to Use this Guide

As a source of general information, you can use this guide to help you understand the capabilities, functions and processes of System Migration Assistant before installing the program.

In using the System Migration Assistant product, this guide is most effective when used in the following order:

1. Review Chapter 1 to become more familiar with the concept and abilities of System Migration Assistant
2. Download the System Migration Assistant program from the World Wide web, if you have not done so already.
3. Review Chapter 2 and install System Migration Assistant, following these instructions.
4. While the program is running, read through Chapter 3 and examine the details of the interface as each part is described in this guide.
5. Review the examples given in Chapter 4. Complete the examples step-by-step until you feel confident in working on your own System Migration Assistant processes.
6. Included in Chapter 4 is an example of using System Migration Assistant with LANClient Control Manager. This example is for those who are already familiar with the LANClient Control Manager product.

Chapter 1. Overview and Concepts of System Migration Assistant

Overview	2
Supported Client Systems	2
Supported Operating Systems	2
Basic Operation	3
Interface Components	3
Concepts	4
Personality Settings	4
Connectivity Settings	4
Data Files	4
Printer Settings	5
System Migration Assistant File Types	5

Overview

Typically, when end users receive replacement systems, the look and feel of the new system is different. This is a result of using default settings when the operating system is installed. You, the systems administrator, or the end user, must spend time reconfiguring the settings for a basic level of service or function.

System Migration Assistant (SMA) provides you with a single tool to simplify adding personalization to an existing or newly created desktop of a Microsoft Windows operating system. Once a migration is created, you can import this file to another system, a series of supported systems, and in some cases, to another supported Windows operating system. Key features include:

- Migrate Personality Settings such as Start Menu, Display, and, Accessibility.
- Migrate Connectivity Settings such as Gateways, Domains, and, WINS.
- Allows the systems administrator to clone system Printer Settings and to use this configuration file with multiple systems.

Supported Client Systems

The IBM System Migration Assistant can migrate a Windows desktop settings from any brand of Pentium based PC to selected IBM systems, including PC, IntelliStation, ThinkPad and Netfinity servers. PC, IntelliStation, and ThinkPad can be migrated interchangeably while servers can only migrate to other servers.

The complete and up-to-date list of selected IBM systems can be found on the System Migration Assistant website:

<http://www.pc.ibm.com/us/software/sysmgmt/products/sma/docs.html>

Supported Operating Systems

The IBM System Migration Assistant migrates settings (Personality and Connectivity) and selected data files for the following supported Microsoft operating systems:

Settings Migration Table				
From - To	Windows 95	Windows 98	Windows NT 4.0 Workstation	Windows NT 4.0 Server
Windows 95	Group A & B	Group A & B	Group A	
Windows 98		Group A & B	Group A	
Windows NT 4.0 Workstation			Group A & B	
Windows NT 4.0 Server				Group A & B

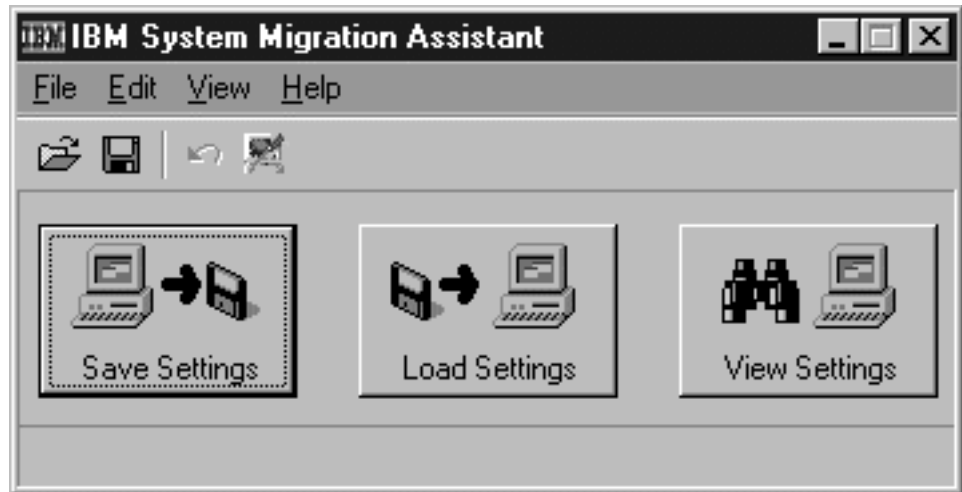
- Group A Settings: Personality, Connectivity, Data Files
- Group B Settings: Printer Settings

Basic Operation

System Migration Assistant reads the operating system registry, compiles the information, and displays it in the *Current Settings* window. These settings reflect the current attributes of the system.

System Migration Assistant, while running, allows the user to view the present settings, save the selected settings, or load new settings. These actions can be accessed from the main window.

The following illustration shows the SMA main window.



You can choose which settings are saved by editing the selections in the *Configuration Editor*. You can also save multiple configurations of the same operating system. SMA creates a migration file according to the settings saved by the configuration editor.

SMA supports drag-and-drop migration. Also, the SMA program can be run as a command-line application in a Command Prompt window of Windows 95/98 and Windows NT. For more information about the command-line parameters, see “Command Line Syntax” on page 19.

Interface Components

The interface of System Migration Assistant consists of the following major components:

- System Migration Assistant window

This is the main window of the program, where you can load, save, and view system settings. This window supports drag-and-drop of .SMA files.

- Options window

By selecting *Options* from the *Edit* selection in the Main Menu, you can have SMA create a backup of existing settings before initiating a migration of new settings.

- Current Settings window

By selecting the **View Settings** button, this window displays current Personality and Connectivity settings of client system.

- Configuration Editor window

To create a migration file (.SMA), you must first specify which configuration settings you wish to include. To do this, you must use the Configuration Editor. The editor contains a main window that includes the Personality and Connectivity settings. In the Personality and Connectivity fields, select a setting by clicking on the appropriate checkbox. Clicking a checkbox to remove a check will not include this setting in a migration file.

- Data Files window

You can include additional files within the migration by clicking on the Data Files button within the Configuration Editor. This Data Files window allows you to select files and folders that will be included along with the settings in your migration file.

- Report window

A Report window appears when a migration (from a new configuration or restoring a old configuration) has completed successfully or you have selected to view a listing of installed applications.

Also, a report window appears after selecting *Installed Applications* from the *View* selection in the Main Menu. This report will display all applications that have been installed through the Windows *Add/Remove Applications* program. Both reports can be saved as a text file.

Concepts

The following conceptual information will help you understand the various elements used by System Migration Assistant.

Personality Settings

Personality Settings are those operating system environment elements that control the look and feel of the desktop. SMA records environment settings like color, wallpaper, and display. The Personality Settings also record basic hardware attachments, such as, keyboard, mouse, and sound.

Connectivity Settings

All network connectivity elements are recorded in the Connectivity Settings. When a SMA migration file is created using selected Connectivity Settings, the network attributes for this particular client are recorded.

Note: While client systems can share migrated Personality Settings, not all Connectivity Settings can be shared. Be sure to use Connectivity Settings for one-to-one migration only. For example, two systems cannot share the same network name on the same network.

Data Files

For advanced users, the Data Files window allows user-specified files and folders to be included in a configuration. Data Files could include such files as AUTOEXEC.BAT, CONFIG.SYS and any text files (.TXT and .DOC).

Printer Settings

Printer settings are included in Personality Settings. However, some migrations do not support the inclusion of printer settings. For more information on specifically supported printer settings migration, see “Supported Operating Systems” on page 2.

System Migration Assistant File Types

SMA creates two new file types specifically for the SMA program. Each file has a separate file extension. The file types are:

- .CFG

This is the SMA configuration file. It is an ASCII file that contains user-specified list of settings. Multiple configuration files can be created for different purposes. A DESKTOP.CFG file might contain some desktop icons, wallpaper, display, and color scheme. A NETWORK.CFG file might specify only network settings. While a .CFG file could be read by a text editor, only the SMA Configuration Editor should be used to edit this file.

- .SMA

This is the migration file used by SMA to change or restore settings listed in a specified .CFG file. This is a binary file that cannot be edited once it is created. Clicking on a .SMA file will incorporate the saved settings within the .SMA file into the present operating system, even if SMA is not currently active. SMA supports drag-and-drop onto the SMA window with this file as well.

Chapter 2. Installing and Running System Migration Assistant

Installing System Migration Assistant	8
Prerequisites	8
Installing System Migration Assistant	8
Running System Migration Assistant	9
Exiting from System Migration Assistant	10
Removing System Migration Assistant	10

Installing System Migration Assistant

Important:

- To have complete functionality with the System Migration Assistant program on a system, you must always log on as a *network administrator or equivalent*, or have *administrator access* to the system Registry data. The following features cannot be set or retrieved if SMA is running without administrator rights:
 - Computer Name
 - Computer Description
 - DNS Configuration
 - Shared Folders & drives
 - TCP/IP configuration
 - WINS configuration
 - Workgroup/Domain

However, the migration to and from a Windows NT system could be implemented by a 2-pass system. The first time would be done by the administrator to set global system-wide settings as mentioned above, then a second pass by the end user to set personality settings.

- You can find the files for installing System Migration Assistant at <http://www.pc.ibm.com/us/software/sysmgmt/products/sma/index.html> on the World Wide Web.

Prerequisites

Migration of Settings from (Legacy):

- a Pentium-based system with
- 4 megabytes of RAM
- 5 megabytes of hard drive space
- and a supported Windows Operating system

Migration of Settings to (Target):

- Any supported IBM PC system
- with a supported Windows Operating System

Installing System Migration Assistant

To install a System Migration Assistant program:

1. Follow the instructions at <http://www.pc.ibm.com/us/software/sysmgmt/products/sma/index.html> on the World Wide Web to download System Migration Assistant.
2. From the directory into which you downloaded the System Migration Assistant program, run the SMA_PROGRAM.EXE program to unpack the SMA program and a readme.txt file.

Any changes or updates will be explained in the readme file.

Running System Migration Assistant

The following is for starting System Migration Assistant from the system on which it was installed.

Before starting the program, make sure that you are logged on to the operating system as a system administrator or equivalent to have full access to all necessary settings.

To start the System Migration Assistant Graphical User Interface (GUI), change to the directory where SMA was installed. Click on **SMA.EXE** and the SMA visual interface will appear on your desktop.

For information about the various interface components, see “Interface Components” on page 3, and, Chapter 3, “Understanding the Interface” on page 11.

To run SMA from the command line, see “Command Line Syntax” on page 19.

Exiting from System Migration Assistant

To exit the program from the menu bar:

1. Select **File** from the main operating window of SMA.
2. Select **Exit**.

Otherwise, click on the 'X' (*Window program exit*) in the upper right hand corner of the main window.

Removing System Migration Assistant

Removing SMA is a manual process. To remove SMA and all associated files:

1. In the Windows Explorer, change to the directory and folder where you installed SMA.
2. Select
 - *SMA.EXE*
 - All files, within the SMA installation directory, that end with the file extension *CFG*
Note: Some programs use the file extension, *.CFG*, for other processes. Keep track of which files are SMA configuration files.
 - All files that end with the file extension *SMA*
3. Delete all selected files.
4. Within the Windows Registry search for, and remove, these keys:
 - HKEY_CURRENT_USER\Software\IBM\System Migration Assistant
 - HKEY_CLASSES_ROOT\.SMA
 - HKEY_CLASSES_ROOT\sma_auto_file

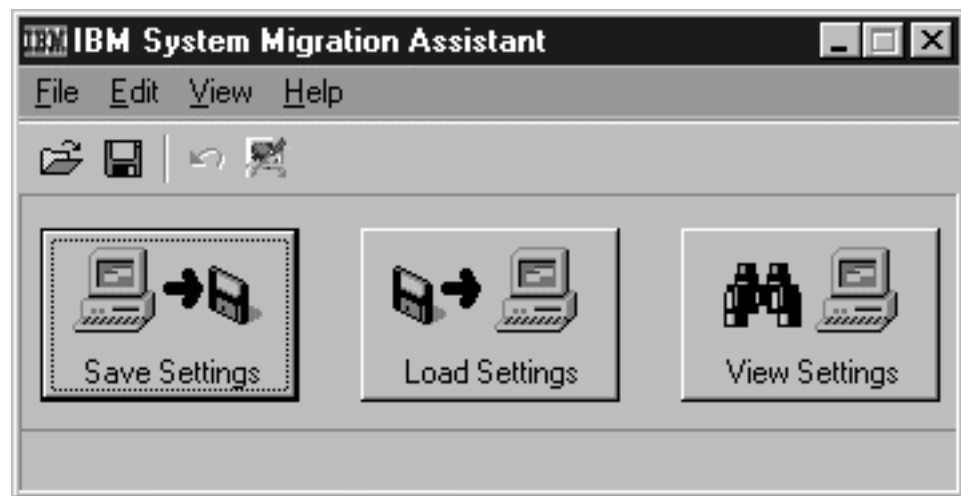
Chapter 3. Understanding the Interface

System Migration Assistant window	12
Save/Load/View Settings	12
Current Settings window	13
Configuration Editor window	13
Personality Settings	15
Connectivity Settings	16
Data Files window	17
Report window	17
Command Line Syntax	19

System Migration Assistant window

The main window within SMA is the System Migration Assistant window. Each time the program is started, the System Migration Assistant window is the first window to appear after the initial welcome window.

Using the large buttons in the System Migration Assistant window, you can save settings, load settings and view settings. The tool bar above the buttons allows you to load or save settings, restore previous settings, and open the Configuration editor. The additional menu bar at the top of the window provides access to all other functions within the program.



When moving within the System Migration Assistant window and other windows of the program and when selecting items on the screen, you can use the mouse or keyboard (ALT key, ARROW keys, TAB key, ENTER key, and so on).

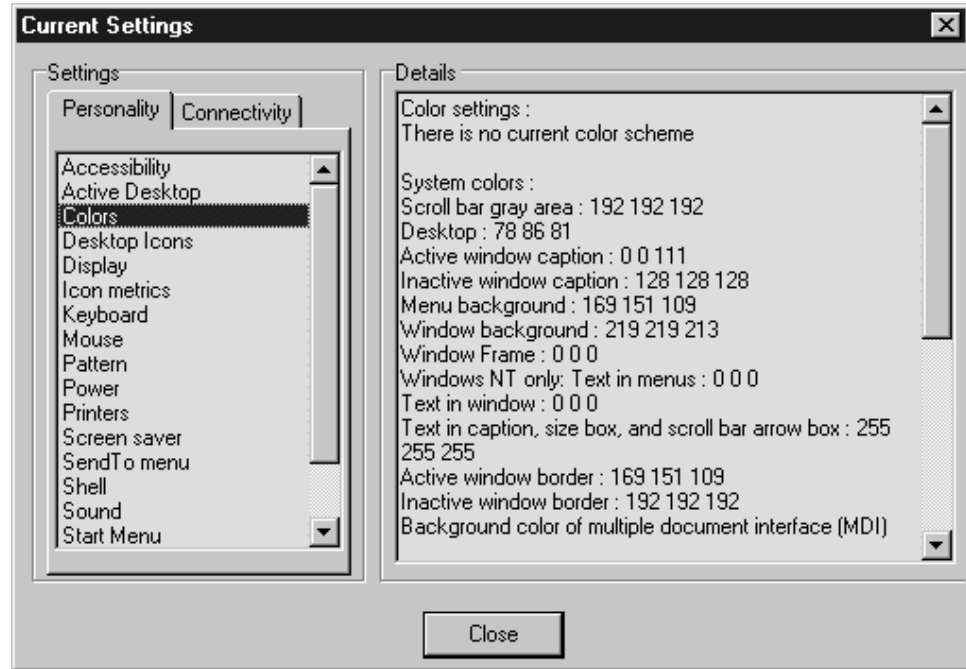
Save/Load/View Settings

Clicking on one of these buttons will perform an action pertaining to the settings on the client system. The actions are:

- *Save Settings* will open a directory window. Type in a name for your migration file. The default file type is .SMA. Click on **Save** to save the file.
- *Load Settings* will open a directory window. The default directory is the SMA program directory folder. Click on the appropriate file and click on **Open** to initiate the settings migration.
- *View Settings* will open the Current Settings window. For more information on the Current Settings window, see "Current Settings window" on page 13.

Current Settings window

The Current Settings window show the current configuration and settings of the client system that SMA is running on. The window is divided into two sections, Settings and Details.



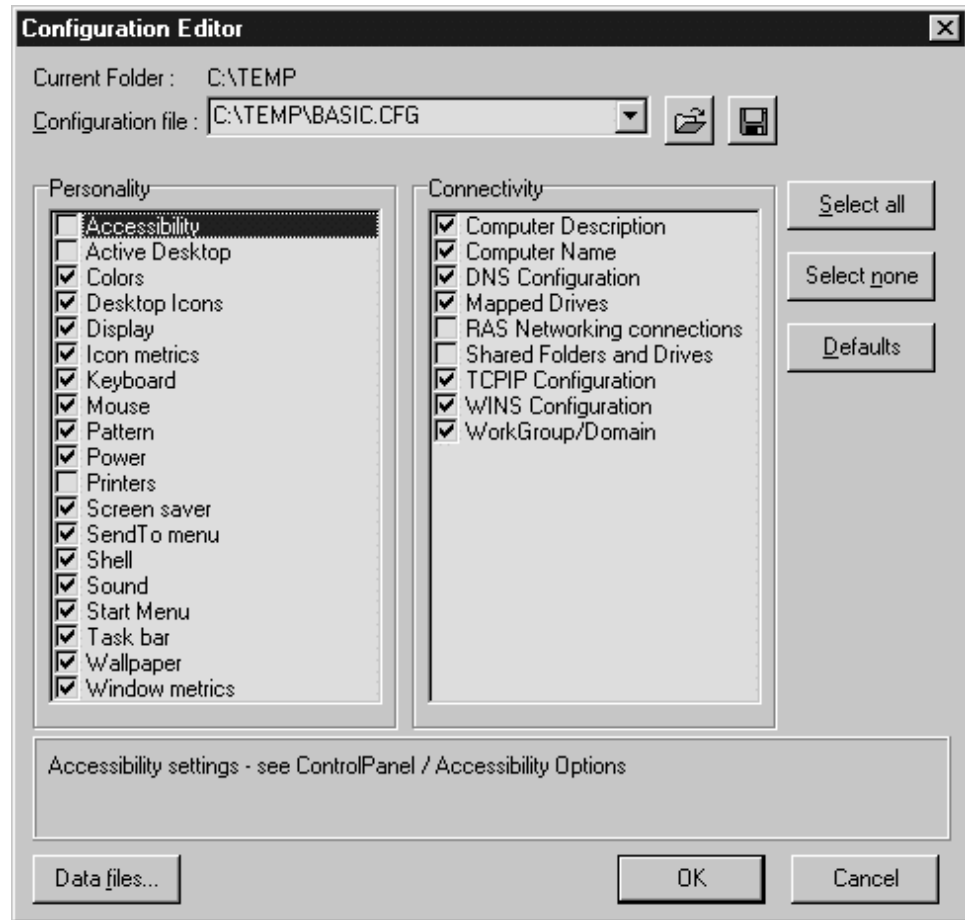
The Settings section has two tabbed selections, Personality and Connectivity. Each tabbed selection contains a listing of settings pertaining to that particular selection. For a complete listing of settings for both Personality and Connectivity, see “Configuration Editor window.”

When you click on a setting in either the Personality or Connectivity selection, information on this selection will appear in the Details window.

Configuration Editor window

The Configuration Editor is called by clicking on the tool bar selection or through the text menu in the main operating window, or saving a migration file and editing the selected configuration file. A configuration file is a text file with an extension of .CFG. This file contains the list of settings that you have selected for migration.

The following illustration shows the Configuration Editor.



The areas within the editor are:

- Current Folder

The current folder is the directory path in which the configuration file is saved or opened. The current folder defaults to the SMA installation directory.

- Configuration File

The text area shows the filename of the current configuration file. If a file has yet to be created, this area will be blank. The two buttons next to the field will open or save a configuration file.

- Personality and Connectivity

The two fields below the Configuration File field are user-selected settings, Personality and Connectivity. Three buttons to the side of the Connectivity area relate to Personality and Connectivity settings. **Select All** will select all settings in both fields. **Select None** will deselect all settings in both fields. Selecting **Defaults** will select all settings in both settings fields, *except* for the Printer settings in the Personality field.

The area just below the settings windows is the settings description area. When you click on a particular setting, this window will describe the elements that make up that setting.

- Data files

In the lower corner of the window, the button, **Data Files**, opens up the Data File window. Data files are those additional files not specified as a system setting. For more information about the Data File window, see “Data Files window” on page 17.

- Okay/Cancel

To create a configuration file, click **Okay**. The file created is now the template from which a migration file can be created. To exit out of the Configuration Editor without creating a configuration file, click **Cancel**.

Personality Settings

To select a setting for migration click a check mark in the corresponding settings menu in the Personality field. The settings in the Personality field are:

Check Box	Settings Saved
Accessibility	Accessibility settings
Active Desktop	Active Channel settings, Active Desktop Wallpaper and Pattern settings; for systems with IE 4.0 or Windows 98
Colors	Settings and Schemes
Desktop Icons	Icons on the desktop which relate to installed applications; size and position Note: The operating system default icons, "My Computer", "Network Neighborhood", "Inbox", "The Internet," and the "Recycle Bin" are operating system specific icons and cannot be migrated. Note: Icon positions cannot be stored or saved on Windows NT.
Display	Screen resolution and color depth
Icon metrics	Icon sizing, spacing, and font type
Keyboard	Keyboard Settings (repeat rate)
Mouse	Button functionality, speed, double-click rate and region
Pattern	Bitmap filename
Power	Advanced Power Management (APM) settings
Printers	Settings, path, and drivers Note: Printer settings will not migrate from Windows NT to Windows 95/98 or vice versa.
Screen saver	Current screen saver program and time to sleep setting
SendTo Menu	Contents in the menu
Shell settings	File management settings; file attributes, viewing options
Sound	Active sound scheme
Start Menu	Menu selections from the Start Menu

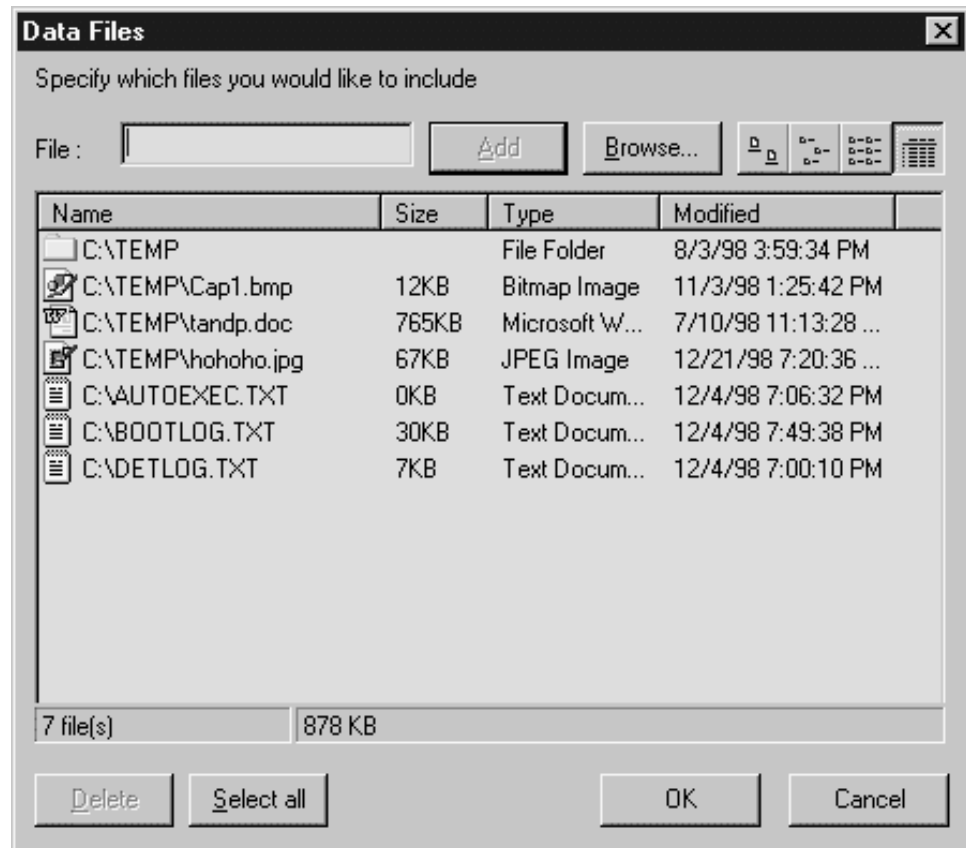
Check Box	Settings Saved
Taskbar	Settings that are selected in the Start Menu ->Settings ->Taskbar window
Wallpaper	Bitmap file; Image proportions (tile, centered, stretched)
Window metrics	Settings for individual windows <ul style="list-style-type: none"> • minimized window spacing, position • border size, scroll bar size, caption font type, menu font type, status bar font • window animation setting (on minimize, restore)

Connectivity Settings

To select a setting for migration click a check mark in the corresponding settings menu in the Connectivity field. The settings in the Connectivity field are:

Check Box	Settings Saved
Computer Description	Additional system identifier
Computer Name	ID of computer on a network
DNS Configuration	Network gateway servers addresses
Mapped Drives	Network drives connected to the client system
RAS Networking Connections	RAS Phone book entries
Shared Folders and Drives	Folders, drives, and permissions shared by the Host system
TCP/IP Configuration	IP network protocol settings (address, mask, DNS, DHCP)
WINS Configuration	Windows Name Server address
WorkGroup/ Domain	Identity of network workgroup, domain for client system

Data Files window



Clicking on the Data Files button in the Configuration Editor brings up the Data Files window. The Data Files window allows you to add certain files and folders to the migration file. To add a file to the list, enter the filename in the File: text field and click on **Add**. Wild card filenames (including * and ?) are acceptable. Folders may be added in the same way. Also, selected files (from the desktop or through the Windows Explorer) can be added using the drag-and-drop method.

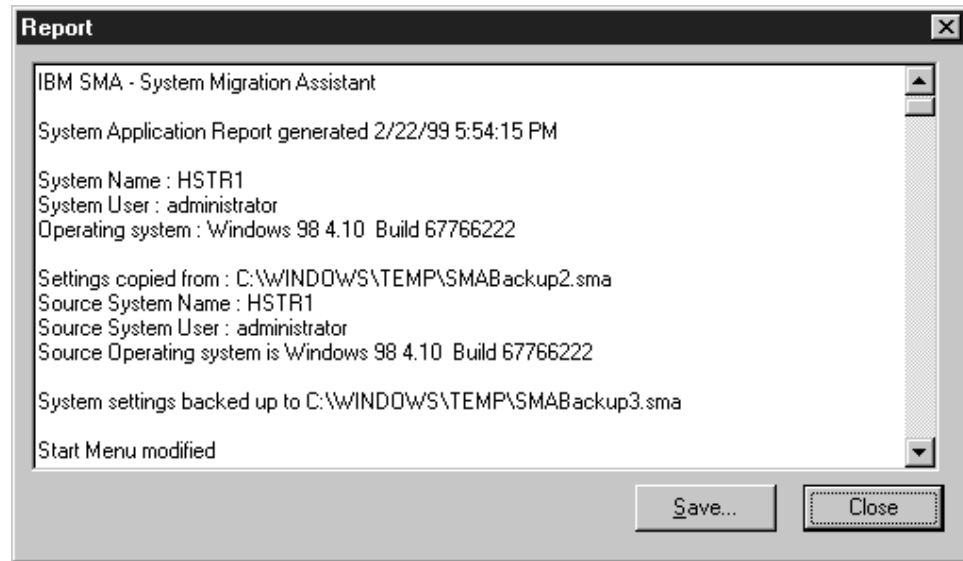
There is a context sensitive menu available on the Data Files dialog box for arranging the list view. There are viewing feature buttons as well (large icons, small icons, list, or detailed). Keyboard controls such as **CTRL+A** will select all the files listed, while the **Delete** key will remove the highlighted file or files from the list.

Click on **Okay** to return you to the Configuration Editor.

Report window

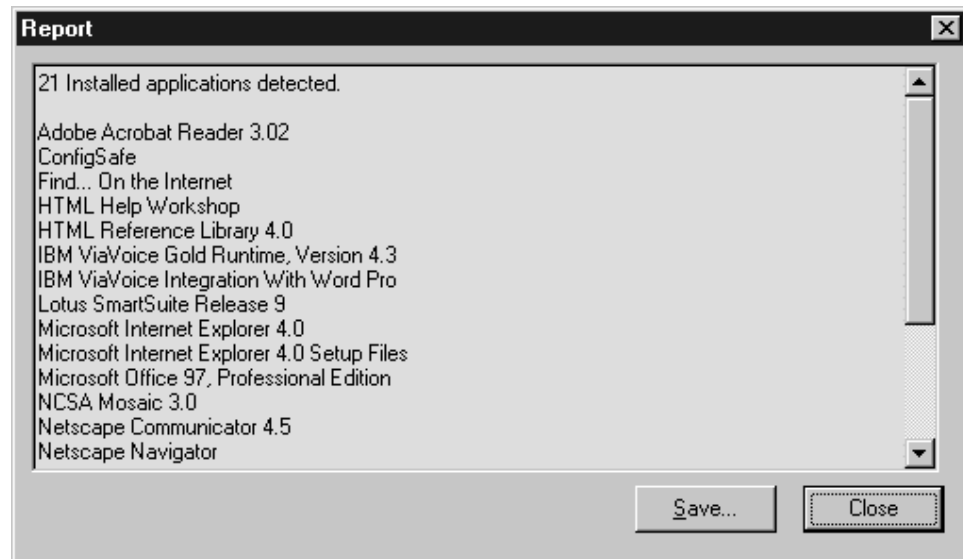
The Report window shows, in detail, the effects of the current migration or it can show you a listing of installed applications.

You can view a report at the end of a successful migration.



If a setting is not transferrable to the present client system, the report will inform you of this. Other settings that have been migrated will be detailed.

To view a listing of installed applications, select *View* from the menu bar of the main window and click on *Installed Applications*.



Both reports can be saved as a text file by clicking on **Save**. To close a report, click on **Close**.

Command Line Syntax

System Migration Assistant can be run with command-line parameters through the operating system Command prompt window. SMA is not a stand alone DOS product, however. After opening a Command prompt window within your client operating system, you may enable SMA features by typing in the command line:

```
C:\SMA_Install\SMA.EXE [options]
```

where SMA_Install is the location of the SMA product

Options for the command are:

-l <filename.sma>	Load settings from the given file
-s <filename.sma>	Save settings to the given file
-r <filename.txt>	Generate a report file
-b <filename.sma>	Backup existing settings to the given file when loading new settings
-c <filename.cfg>	Use the specified configuration file when saving settings
-a <filename.txt>	List installed applications
-q	Quiet mode; no prompts given

Chapter 4. Using Systems Migration Assistant

Creating a Configuration File	22
Creating a Migration File	23
Enabling a Migration	24
Using SMA with LANClient Control Manager	26

Creating a Configuration File

This section illustrates the steps necessary in creating a configuration file using SMA. The configuration file is the basis of any SMA migration. This file is the instruction guide for SMA with which to build a migration file.

Objective:

- Select Personality and Connectivity Settings
- Add additional Data files
- Create a Configuration file

Before you begin, you must have the following:

- Installed SMA on the client system
- You have *Administrator Priviledges* on the client system
- Copied the system AUTOEXEC.BAT file and renamed the copy, AUTOEXEC.TXT

To create a Configuration file:

1. Go to the SMA installation directory and run SMA.EXE.
2. In the main window, click on the Configuration Editor icon in the tool bar.
3. The Configuration Editor window appears. Click on **Select none** button to remove all the settings.
4. In the Personality field, check settings Colors, Pattern, and Wallpaper.
5. In the Connectivity field, check settings Computer Description and Computer Name.
6. Now, click on the **Data files** button.
7. The Data files window appears. In the File: field, type:
C:\AUTOEXEC.TXT
8. Click on the button, **Add**. The file should appear in the list view. Click **Okay** to continue.
9. In the Configuration file field of the Configuration editor, type:
TESTONE
10. Click on **Okay** to save the configuration file.

After saving the configuration file, TESTONE.CFG, check in the SMA installation directory (default directory) for this file. If you see this file, you have completed this section successfully and can continue on to creating a migration file.

Creating a Migration File

This section illustrates the steps necessary in creating a migration file using SMA. The migration file contains all the configuration data from your configuration settings. This file is necessary to completing a migration to a new system.

Objective:

- Select a Configuration file
- Create a migration file

Before you begin, you must have the following:

- Installed SMA on the client system
- You have *Administrator Priviledges* on the client system
- A valid SMA Configuration file

To create a migration file:

1. If SMA is not already running, go to the SMA installation directory and run SMA.EXE.
2. In the main window, click on the **Save Settings** button.
3. In the File name field, type:

TESTTWO

The Configuration Editor window appears. The last saved Configuration file name will be in the Configuration file field. For our example, we will use the Configuration file from the previous section (TESTONE.CFG).

4. Click **Okay**

The process for creating our small migration file is short. For migration files with more settings and other files, the migration process window will stay on the screen for a longer time. The process is complete when the process window disappears.

After creating the migration file, TESTTWO.SMA, check in the SMA installation directory (default directory) for this file. If you see this file, you have completed this section successfully and can continue on to enabling a migration file.

Enabling a Migration

This section illustrates the steps necessary in enabling a migration on a new system using SMA. The migration file contains all the configuration data from your configuration settings. You will use this file to complete a migration of settings from one system to another.

Objective:

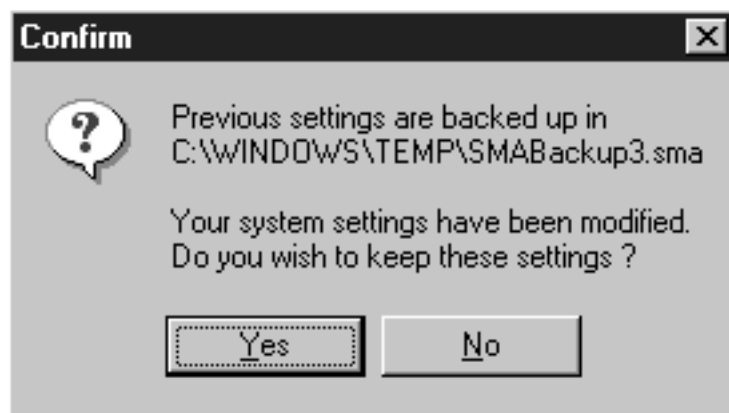
- Select migration file
- Enable a migration of settings and an additional file

Before you begin, you must have the following:

- Installed SMA on the new client system
- You have *Administrator Priviledges* on the client system
- A valid SMA migration file

To enable a migration:

1. At the old system (the one that was used to create the migration file), copy the file, TESTTWO.SMA, to diskette. Since the number of settings and additional files were few, the migration file should fit onto the diskette.
2. Copy the migration from the diskette to the SMA installation directory.
3. Go to the SMA installation directory and run SMA.EXE.
4. In the main window, click on the **Load Settings** button.
5. In the File name field, type the name of the migration file or select it with your cursor.
6. Click **Open**. The migration will take place very quickly because of the small migration file size. The noticeable settings of Colors, Pattern, and Wallpaper will have changed to those of the other client system.
7. After the settings have been migrated, they are enabled temporarily. A pop-up window asks if want to keep these new settings. Also, if you have specified a backup of the previous settings, the window will detail the pathway to the backup file.



Selecting **Yes** will keep your new settings active. The previous settings will be kept, if specified, as the file name detailed in the pop-up window.

Selecting **No** will revert the desktop settings back to the previous state. Your new settings will not be made active.

8. Upon acceptance of the new settings, a report of the settings (and files) migrated to the new system is generated. You may save this file as a text file for reference purposes, or close it, and not keep it.

You have completed a successful migration of one system settings to another.

Using SMA with LANClient Control Manager

Using System Migration Assistant, setting up a new PC is faster and less costly than before, often done in just minutes. Combine this program with the network reach of LANClient Control Manager (LCCM), version 2.5, and you can migrate PC settings remotely. This means less administrator time, fewer help desk calls and less inconvenience to the user.

The steps detailed below are a sample migration of settings to a supported IBM PC system. You must use the previous steps to acquire a migration file from a legacy system.

Note: To use this process, you must have LCCM version 2.5 installed on a Windows NT 4.0 server in your network. Also, extensive knowledge of LCCM version 2.5, including basic network technology and terminology, is required to understand this section. You will be editing LCCM profile-wizard created profiles using this example.

Objective:

- Add the System Migration Assistant program to the LANClient Control Manager (LCCM) program
- Edit an LCCM Windows 95 or Windows 98 installation profile to include the SMA program
- Define the SMA variables within the LCCM program
- Assign and process a system using the SMA enhanced LCCM profile

Before you begin, you must have the following:

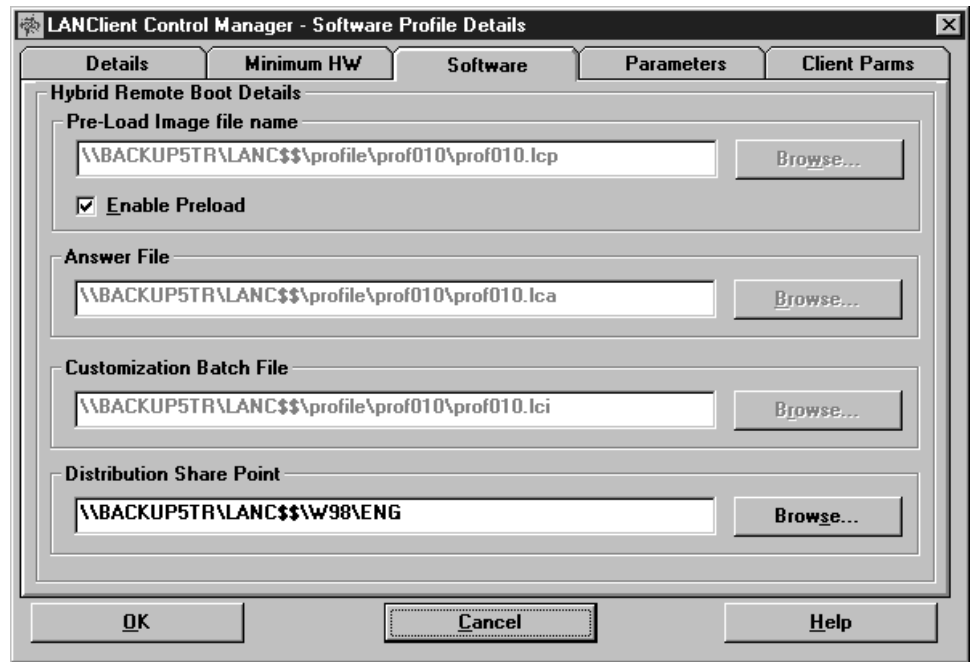
- LANClient Control Manager running on a Windows NT 4.0 server
- *Administrator Privileges* on the server
- Copies of the migration files (.SMA file extension) from your legacy systems

To incorporate SMA with LANClient Control Manager:

1. At the LCCM console, create an SMA folder within the LCCM directory:
`C:\LCCM_Install_directory\CLNTFILE\IMGWIZ`
2. Copy the SMA program (SMA.EXE) to the new directory.
3. Copy the SMA-created migration files (.SMA file extension) to the new directory.
4. Within the LCCM program, create a Windows 95 or Windows 98 profile using the LCCM profile wizard.
5. Open up the Software Profile details notebook for this new software profile.
6. Click on the Client Params tab.
7. At the next available Name parameter field, add the value:
`SMA_FILE`
DO NOT ADD ANY VALUES TO THE ASSOCIATED DEFAULT VALUES FIELD
8. Click on the Software tab.

- Look at the Customization Batch File field and note the name of the directory after the directory PROFILE. The directory will be named PROFILE nnn , where nnn is the number created by LCCM when using the Profile Wizard. You will edit files in this directory to add the SMA enhancements.

The following is an example of the Software Tab section:



- Select and open the noted LCCM wizard-created profile directory within the LCCM directory:

```
C:\LCCM_Install_directory\CLNTFILE\PROFILE\
```

- Using NOTEPAD.EXE, edit the file named CLIENT.BAT, using this example:

```
@echo off
echo LCCM - Processing. Please wait...
net use s: \\BACKUP5TR\LANC$$
s:\imgwiz\utils\appsinst.exe "\\BACKUP5TR\LANC$$\profile\prof010\runapps.ini"

REM ***** ADD THESE LINES TO CLIENT.BAT
if %SMA_FILE%.==. goto NOSMA
s:\imgwiz\sma\sma.exe -l s:\imgwiz\sma\%SMA_FILE%.sma -r c:\%SMA_FILE%.txt -q
:NOSMA
REM ***** ADD THE LINES ABOVE TO CLIENT.BAT

s:\imgwiz\utils\flowctrl.exe
```

- In the same directory and using NOTEPAD.EXE, edit the file named PROF nnn .LCI, using this example:

```

rem Win98 Unattended Install LCI

rem Substitute environment variables into answer file
%LCCMPATH%\LCCUSTOM %TARGET%\INSTALL\MSBATCH.INF
if ERRORLEVEL 1 goto ERROR

REM ***** ADD THESE LINES TO PROFnnn.LCI
REM Substitute sma_file variable into client.bat file
%LCCMPATH%\LCCUSTOM %TARGET%\CLIENT.BAT
if ERRORLEVEL 1 goto ERROR
REM ***** ADD THE LINES ABOVE TO PROFnnn.LCI

goto END
:ERROR
echo Error - Exiting LCI file

:END

```

13. Within the Software Profile notebook, click **Okay** to save the profile.
14. Assign a client, or clients, to this new profile. When the profile wizard prompts you for the SMA_FILE value, input the name of the SMA migration file for that particular client.
15. Process the profiles as you would a normal software profile. The SMA enhancement to the LCCM process will occur automatically after the operating system installation phase.

Appendix A. User Assistance

SMA Support Form

Support for IBM System Migration Assistant is provided via e-mail for registered users only. Response time varies on support queries. You may access the support form through your web browser at this IBM website:

<http://www.pc.ibm.com/us/software/sysmgmt/products/sma/support.html>

SMA Users Forum

For new and advanced users of SMA, an SMA Forum website is available. This Forum is monitored by IBM personnel and will discuss and answer many of the common questions relating to SMA and its implementation. The Forum is accessible from the SMA home page at:

<http://www.pc.ibm.com/us/software/sysmgmt/products/sma/support.html>

Appendix A. Notices and Trademarks

Notices

References in this publication to IBM products, programs, or services do not imply that IBM intends to make these available in all countries in which IBM operates. Any reference to an IBM product, program, or service is not intended to state or imply that only that IBM product, program, or service may be used. Subject to IBM's valid intellectual property or other legally protectable rights, any functionally equivalent product, program, or service may be used instead of the IBM product, program, or service. The evaluation and verification of operation in conjunction with other products, except those expressly designated by IBM, are the responsibility of the user.

IBM may have patents or pending patent applications covering subject matter in this document. The furnishing of this document does not give you any license to these patents. You can send license inquiries, in writing, to:

IBM Director of Licensing
IBM Corporation
North Castle Drive
Armonk, NY 10504-1785
U.S.A.

Licensees of this program who wish to have information about it for the purpose of enabling: (i) the exchange of information between independently created programs and other programs (including this one) and (ii) the mutual use of the information which has been exchanged, should contact IBM Corporation, Department 80D, P.O. Box 12195, 3039 Cornwallis, Research Triangle Park, NC 27709, U.S.A. Such information may be available, subject to appropriate terms and conditions, including in some cases, payment of a fee.

Trademarks

The following terms are trademarks of the IBM Corporation in the United States or other countries or both:

IBM
ThinkPad
Netfinity
IntelliStation

The following terms are trademarks of other companies:

Microsoft, Windows, Windows NT, and MS are trademarks or registered trademarks of Microsoft Corporation.

Other company, product, and service names may be trademarks or service marks of others.

